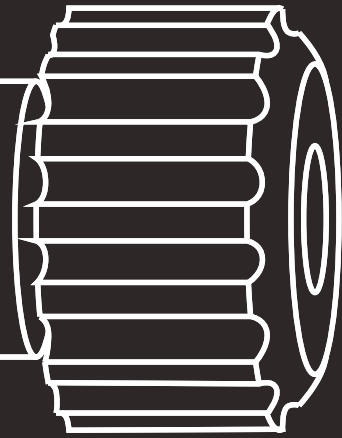
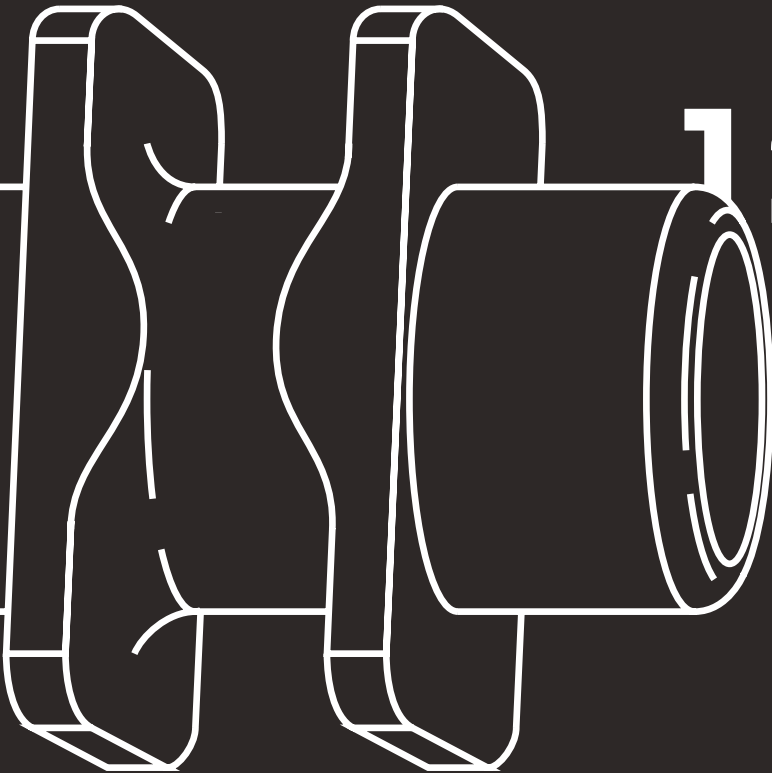


Black Line.12

Prosthetic components compatible with
Megagen anyridge series® implants



12.



Black Line.12

Titanium grade 5

Prosthetic components compatible with
Megagen anyridge series® implants

Healing Screws.

Ref. Number Diameter \varnothing Height (mm)

12.500.403

5

3

12.500.405

5

5



Lab Analogs.

Ref. Number Diameter \varnothing

12.500.200

5

* Only one lab analog for both methods
(impression or scanning)



Impression Posts.

Ref. Number Diameter \varnothing Impression Method

12.500.500

5

Open Tray

12.500.550

5

Closed Tray

◆ Screw Ref. Number: Open Tray: 12.500.100
Cloed Tray: 12.100



Scan Bodies.

Ref. Number Diameter \varnothing

12.500.SA

5

◆ Screw Ref. Number: 12.100

* Novamind scan bodies are used only in combination to novamind free libraries either with novamind ti-bases or directly on implant restorative platforms. Scan Bodies are made of peek and are easily scanned with intra-oral and desktop scanners.



Black Line.12

Prosthetic components compatible with
Megagen anyridge series® implants

Ti-Bases.



Ref. Number	Diameter \varnothing	Gingiva Height (mm)
-------------	------------------------	---------------------

 12.500.600.10	5	1.0
 12.500.600.20	5	2.0
 12.500.601.10	5	1.0
 12.500.601.20	5	2.0

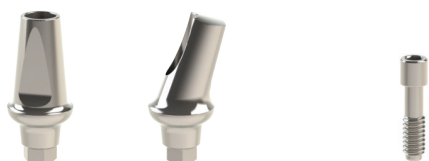
 Anti-Rotation

 No Anti-rotation

 Screw Ref. Number: 12.100

* Novamind TI-BASES are colored with a warm Golden Hue for better aesthetic effect. They are available in two types, with and without antirotation depending on the type of restoration (crown or bridge)

Titanium Abutments for cemented restorations.



Ref. Number	Diameter \varnothing	Angulation Degrees(°)	Gingiva Height (mm)
-------------	------------------------	-----------------------	---------------------

12.500.00.200	5	0 °	2
12.500.17.200	5	17 °	2





 Screw Ref. Number: 12.100

* Available in different degrees of angulation 0°, 17°, and in some cases 23°. Three different gingiva height collars to optimize the best possible emergence profile.

Castable Abutments.



Ref. Number	Diameter \varnothing
-------------	------------------------

 12.500.300	5
 12.500.301	5
 12.500.710	5
 12.500.711	5

 Anti-Rotation

 No Anti-rotation

 Screw Ref. Number: 12.100

* Two types of castable abutments are available. One is fully plastic and one is with pre-fabricated Co-Cr implant connection for cast-on.

Black Line.12

Titanium grade 5

Prosthetic components compatible with
Megagen anyridge series® implants

Overdenture Over-Lock Abutments.

Ref. Number Diameter \varnothing Height (mm)



12.500.801	5	1
12.500.802	5	2
12.500.803	5	3
12.500.804	5	4

* Over-Locks are compatible to locator abutments for overdentures. 4 different Heights.

Overlock Standard Retention Kit.

Description

Reference Number



Metal Housing	MH800
Black Lab Plastic	PL.800.BLACK
Blue Plastic Light Retention 0.68 KG	PL.800.BLUE
Grey Plastic Medium Retention 1.36 KG	PL.800.GREY
Clear Plastic Strong Retention 2.26 KG	PL.800.CLEAR

* Available either as a set or individually. They are used in cases where the total angulation axis among implants does not exceed 15°.

Overlock Extended Retention Kit with no Core.

Description

Reference Number



Metal Housing	MH800
Black Lab Plastic	PL.800.BLACK
Red Plastic Light Retention 0.68 KG	PL.800.RED
Orange Plastic Medium Retention 1.36 KG	PL.800.ORANGE
Green Plastic Strong Retention 2.26 KG	PL.800.GREEN

* Available either as a set or individually. They are used in cases where the total angulation axis among implants exceeds 15°.

Black Line.12

Prosthetic components compatible with Megagen anyridge series® implants

Multi-Unit Abutments.



Ref. Number	Diameter \varnothing	Angulation Degrees(°)	Gingiva Height (mm)
MU.12.500.00.150	5	0 °	1.5
MU.12.500.00.250	5	0 °	2.5
MU.12.500.00.350	5	0 °	3.5
MU.12.500.00.450	5	0 °	4.5

* Multi-unit abutments is currently the most accepted and highly recommended solution in screw retained restorations. They have many advantages such as a common prosthetic platform for all implants.

Multi-Unit Prosthetic System.



Description	Reference Number
Healing Screw	MU.402
Impression Post Open Tray	MU.500
Scan Abutment	MU.SA
Lab Analog	MU.200
Plastic Castable	MU.301
Ti-Base	MU.601
Titanium Temporary Cylinder	MU.901

◆ Screw Ref. Number: MU.500.100
MU.100

* Multi-Unit has its own prosthetic components, the same for all implant systems.