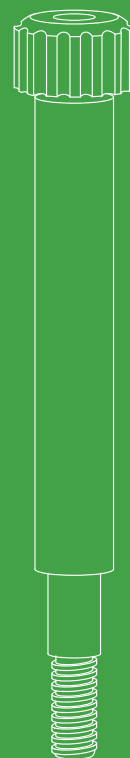
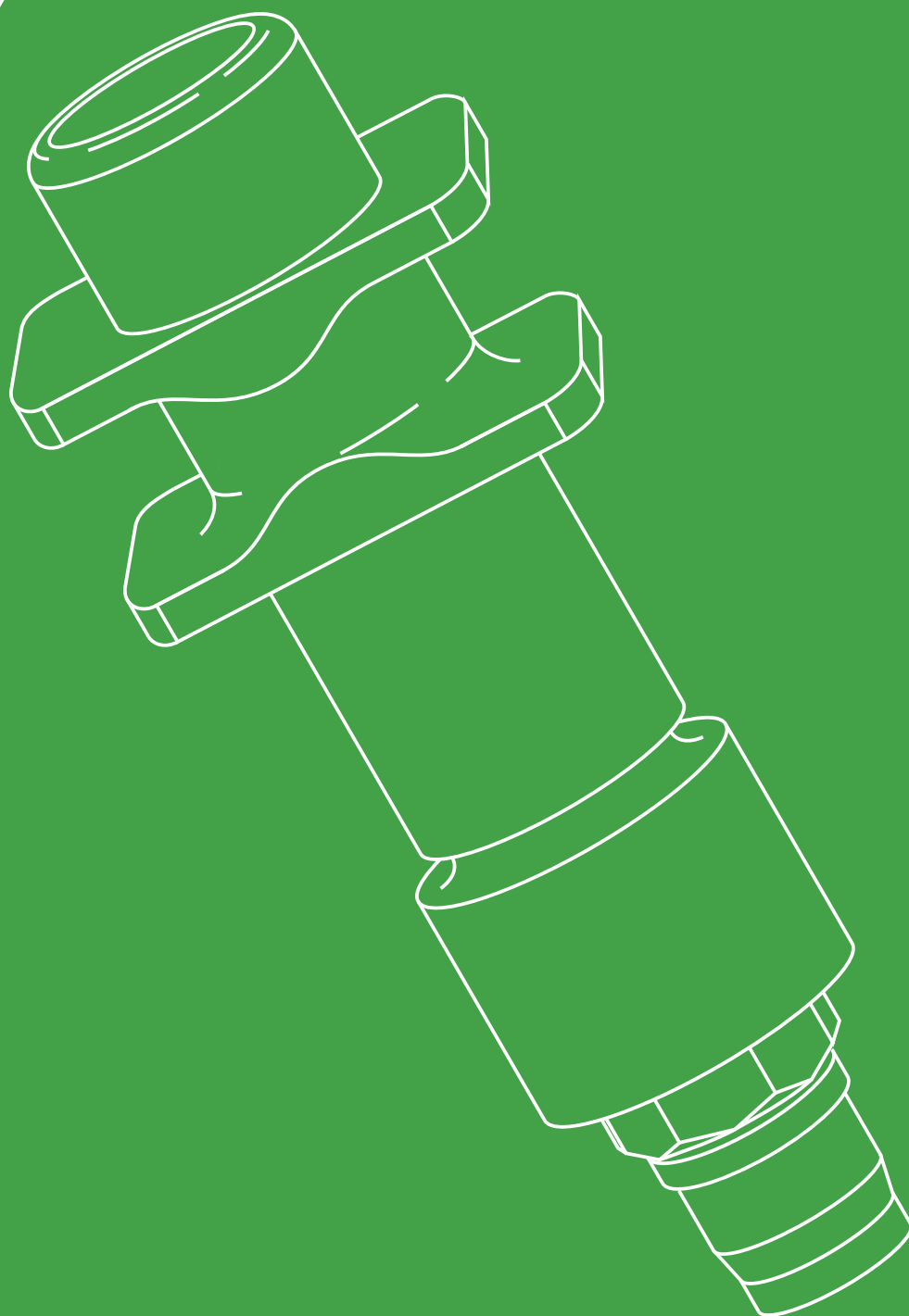




Titanium Grade 5



03.500.100

Green Line.3

Prosthetic components compatible with
BIOMET 3i CERTAIN® implants

Green Line.3

Titanium grade 5

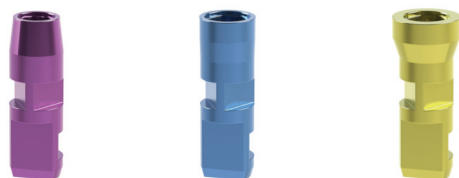
Prosthetic components compatible with
BIOMET 3i CERTAIN® implants

Healing Screws.



Ref. Number	Diameter \varnothing	Height (mm)
03.340.403	3.4	3
03.340.405	3.4	5
03.410.403	4.1	3
03.410.405	4.1	5
03.500.403	5.0	3
03.500.405	5.0	5

Lab Analogs.



Ref. Number	Diameter \varnothing
03.340.200	3.4
03.410.200	4.1
03.500.200	5.0

* Only one lab analog for both methods
(impression or scanning)

Impression Posts.



Ref. Number	Diameter \varnothing	Impression Method
03.340.500	3.4	Open Tray
03.340.550	3.4	Closed Tray
03.410.500	4.1	Open Tray
03.410.550	4.1	Closed Tray
03.500.500	5.0	Open Tray
03.500.550	5.0	Closed Tray

◆ **Screw Ref. Number:** Open Tray: 03.500.100
Closed Tray: 03.100

Scan Bodies.



Ref. Number	Diameter \varnothing
03.340.SA	3.4
03.410.SA	4.1
03.500.SA	5.0

◆ **Screw Ref. Number:** 03.100

* Novamind scan bodies are used only in combination to novamind free libraries either with novamind ti-bases or directly on implant restorative platforms. Scan Bodies are made of peek and are easily scanned with intra-oral and desktop scanners.

Prosthetic components compatible with **BIOMET 3i CERTAIN®** implants

Ti-Bases.



* Novamind TI-BASES are colored with a warm Golden Hue for better aesthetic effect. They are available in two types, with and without antirotation depending on the type of restoration (crown or bridge)

	Ref. Number	Diameter \varnothing	Gingiva Height (mm)
	03.340.600.05	3,4	0,5
	03.340.600.15	3,4	1,5
	03.340.601.05	3,4	0,5
	03.340.601.15	3,4	1,5
	03.410.600.05	4,1	0,5
	03.410.600.15	4,1	1,5
	03.410.601.05	4,1	0,5
	03.410.601.15	4,1	1,5
	03.500.600.05	5,0	0,5
	03.500.600.15	5,0	1,5
	03.500.601.05	5,0	0,5
	03.500.601.15	5,0	1,5

Screw Ref. Number: 03.100

Anti-Rotation

No Anti-rotation

Titanium Abutments for Cemented Restorations.



* Available in different degrees of angulation 0°, 17°, and in some cases 23°. Three different gingiva height collars to optimize the best possible emergence profile.

Ref. Number	Diameter \varnothing	Angulation Degrees(°)	Gingiva Height (mm)
03.340.00.120	3,4	0 °	1,2
03.340.00.270	3,4	0 °	2,7
03.340.00.370	3,4	0 °	3,7
03.340.17.120	3,4	17 °	1,2
03.340.17.270	3,4	17 °	2,7
03.340.17.370	3,4	17 °	3,7
03.410.00.120	4,1	0 °	1,2
03.410.00.270	4,1	0 °	2,7
03.410.00.370	4,1	0 °	3,7
03.410.17.120	4,1	17 °	1,2
03.410.17.270	4,1	17 °	2,7
03.410.17.370	4,1	17 °	3,7
03.500.00.120	5,0	0 °	1,2
03.500.00.270	5,0	0 °	2,7
03.500.00.370	5,0	0 °	3,7
03.500.17.120	5,0	17 °	1,2
03.500.17.270	5,0	17 °	2,7
03.500.17.370	5,0	17 °	3,7

Screw Ref. Number: 03.100

Green Line.3

Titanium grade 5

Prosthetic components compatible with BIOMET 3i CERTAIN® implants

Castable Abutments.

Ref. Number Diameter \varnothing



* Two types of castable abutments are available. One is fully plastic and one is with pre-fabricated Co-Cr implant connection for cast-on.

	03.340.300	3,4
	03.340.301	3,4
	03.340.710	3,4
	03.340.711	3,4
	03.410.300	4,1
	03.410.301	4,1
	03.410.710	4,1
	03.410.711	4,1
	03.500.300	5,0
	03.500.301	5,0
	03.500.710	5,0
	03.500.711	5,0

Anti-Rotation
 No Anti-rotation

Screw Ref. Number: 03.100 / 03.100PL

Overdenture Over-Lock Abutments.

Ref. Number Diameter \varnothing Height (mm)



* Over-Locks are compatible to locator abutments for overdentures. 4 different Heights.

03.340.801	3,4	1
03.340.802	3,4	2
03.340.803	3,4	3
03.340.804	3,4	4
03.410.801	4,1	1
03.410.802	4,1	2
03.410.803	4,1	3
03.410.804	4,1	4
03.500.801	5,0	1
03.500.802	5,0	2
03.500.803	5,0	3
03.500.804	5,0	4

Overlock Standard Retention Kit.

Description

Reference Number



* Available either as a set or individually. They are used in cases where the total angulation axis among implants does not exceed 15°.

Metal Housing	MH800
Black Lab Plastic	PL.800.BLACK
Blue Plastic Light Retention 0.68 KG	PL.800.BLUE
Grey Plastic Medium Retention 1.36 KG	PL.800.GREY
Clear Plastic Strong Retention 2.26 KG	PL.800.CLEAR

Prosthetic components compatible with **BIOMET 3i CERTAIN®** implants

Overlock Extended Retention Kit with no Core.



* Available either as a set or individually. They are used in cases where the total angulation axis among implants exceeds 15°.

Description	Reference Number
Metal Housing	MH800
Black Lab Plastic	PL.800.BLACK
Red Plastic Light Retention 0.68 KG	PL.800.RED
Orange Plastic Medium Retention 1.36 KG	PL.800.ORANGE
Green Plastic Strong Retention 2.26 KG	PL.800.GREEN

Titanium Temporary Cylinders.



	Ref. Number	Diameter ∅	
	03.340.900	3,4	Anti-Rotation
	03.340.901	3,4	
	03.410.900	4,1	No Anti-rotation
	03.410.901	4,1	
	03.500.900	5,0	
	03.500.901	5,0	

Screw Ref. Number: 03.100

* Chairside use or indirect in lab. With and without antirotation depending on the type of restoration (crown or bridge). Golden warm hue for better aesthetics.

Multi-Unit Abutments.



Ref. Number	Diameter ∅	Angulation Degrees(°)	Gingiva Height (mm)
MU.03.340.00.100	3,4	0 °	1.0
MU.03.340.00.200	3,4	0 °	2.0
MU.03.340.00.300	3,4	0 °	3.0
MU.03.340.00.400	3,4	0 °	4.0
MU.03.410.00.100	4,1	0 °	1.0
MU.03.410.00.200	4,1	0 °	2.0
MU.03.410.00.300	4,1	0 °	3.0
MU.03.410.00.400	4,1	0 °	4.0
MU.03.500.00.100	5,0	0 °	1.0
MU.03.500.00.200	5,0	0 °	2.0
MU.03.500.00.300	5,0	0 °	3.0
MU.03.500.00.400	5,0	0 °	4.0

* Multi-unit abutments is currently the most accepted and highly recommended solution in screw retained restorations. They have many advantages such as a common prosthetic platform for all implants.

Green Line.3

Titanium grade 5

Prosthetic components compatible with
BIOMET 3i CERTAIN® implants

Multi-Unit Prosthetic System.

Description

Reference Number



Healing Screw	MU.402
Impression Post Open Tray	MU.500
Scan Abutment	MU.SA
Lab Analog	MU.200
Plastic Castable	MU.301
Ti-Base	MU.601
Titanium Temporary Cylinder	MU.901

◆ **Screw Ref. Number:** MU.500.100
MU.100

* Multi-Unit has its own prosthetic components, the same for all implant systems.