

# Prosthetics Catalogue

---

2020-2021

---

Let's make implant works



Our products have not only been established as quality prosthetic solutions, but have also been recognized as the latest innovative developments in the field of implantology.

# Novamind has become within the last decade synonymous to innovation in dental implant prosthetics.

We have always been true to our initial commitment to offering quality products to the dental world at a decent price, making the quality implant treatment affordable to everyone.

Novamind was among the first manufacturing companies that recognized the global tendency towards screw retained restorations. For that reason, we decided to offer all possible solutions for making screw retained restorations:

- ◆ **Castable plastics**
- ◆ **Co-Cr cast-on**
- ◆ **Ti-bases**
- ◆ **Custom restorations based on STL file**
- ◆ **Multi-unit abutments for all implant systems.**

With Multi-unit abutments, we have succeeded in offering the so called **“one and only restorative platform”**, no matter the implant type.

# Digitalization: the digital era in implantology is already a reality.

Novamind was ready to respond to the high-tech demands of our time presenting a complete workflow and all the necessary components for a high precision digital restoration (photo digital work-flow). Scan bodies, digital analogs, Ti-bases of different types, and a free downloadable library for the most well-known designing software make the life of a clinician easier and time efficient.

Digitalization in implantology contributes drastically to the improvement of implant treatment quality, by offering:

- **Tension free restorations**
- **Stronger structures**
- **Predictability**
- **Repeatability**
- **Faster treatment**



## Tissue friendly components:

All the Novamind abutments follow a modern concave design in the area of the emergence profile, especially in conical connection systems, bearing in mind all biological aspects and promoting the best possible adaptation with the soft tissue.

# Coding: A few words about the coding philosophy of this catalogue to make the reading and ordering easier.

The code number consists of different parts separated with a dot. For example, an abutment with code 05.330.17.270 means the following:

**05.      330.      17.      270.**

The first two digits **(05)** represent the implant line of the catalogue

The next three digits **(330)** represent the diameter of the restorative platform

The next two digits **(17)** represent the inclination in degrees. In this case 17°

The last three digits **(270)** represent the Gingiva Height of the transgingival part in this case is 2,7mm.

The Multi-unit abutments follow the above rules but before the code number there are the initials MU.  
Example: **MU.05.330.17.250**

For the groups of components, we have set a standard numbering:

#### Healing screws:

The two first parts are the same as above (05.330.) and the third part is 402,403,404,405 according to the height. A code 05.330.403 means line 05, diameter 3.3, height 3mm

#### Lab analogs:

Same rule, the first two parts for line and diameter the same and the third part always is 200. So, a code 05.330.200 means line 05, diameter 3.3 and for analog 200

Same philosophy, **impression posts open tray** technique the last part is 500 (05.330.500)

**Impression posts closed tray** technique the last part is 550 (05.330.550)

#### Plastic castables:

Two versions, with and without antirotation. For the first the last part of the code is 300 (05.330.300) and for the second it is 301 (05.330.301)

#### Cast-on Cobalt chrome:

Two versions, with and without antirotation. For the first the last part of the code is 710 (05.330.710) and for the second it is 711 (05.330.711)

#### Ti-Bases:

Two versions, with and without antirotation. For the first the last part of the code is 600 and for the second it is 601. However, there is a last part that represents the GH. So, the full code of the Ti-Bases is (05.330.600.05) and (05.330.601.05) GH is 0.5 mm

#### Over-lock over-denture abutments:

The third part of the code is 801,802,803, 804. The last digit shows the height of the abutment (05.330.801) height 1mm

# Let's make



**yellow line.1**



**orange line.2**



**green line.3**



**blue line.4**



**red line.5**



**purple line.6**

## COMPATIBLE WITH :

XIVE FRIALIT DENTSPLY® implants	_____	<b>8</b>
STRAUMANN SOFT TISSUE LEVEL RN SYSTEM® implants	_____	<b>15</b>
BIOMET 3i CERTAIN® implants	_____	<b>21</b>
NOBEL REPLACE SELECT® implants	_____	<b>27</b>
STRAUMANN BONE LEVEL® implants	_____	<b>33</b>
MIS SEVEN® implants	_____	<b>39</b>

All mentioned brand names in this catalogue are trademarks belonging to their respective companies.



**brown line.8**



**cyan line.10**



**olive line.11**



**black line.12**

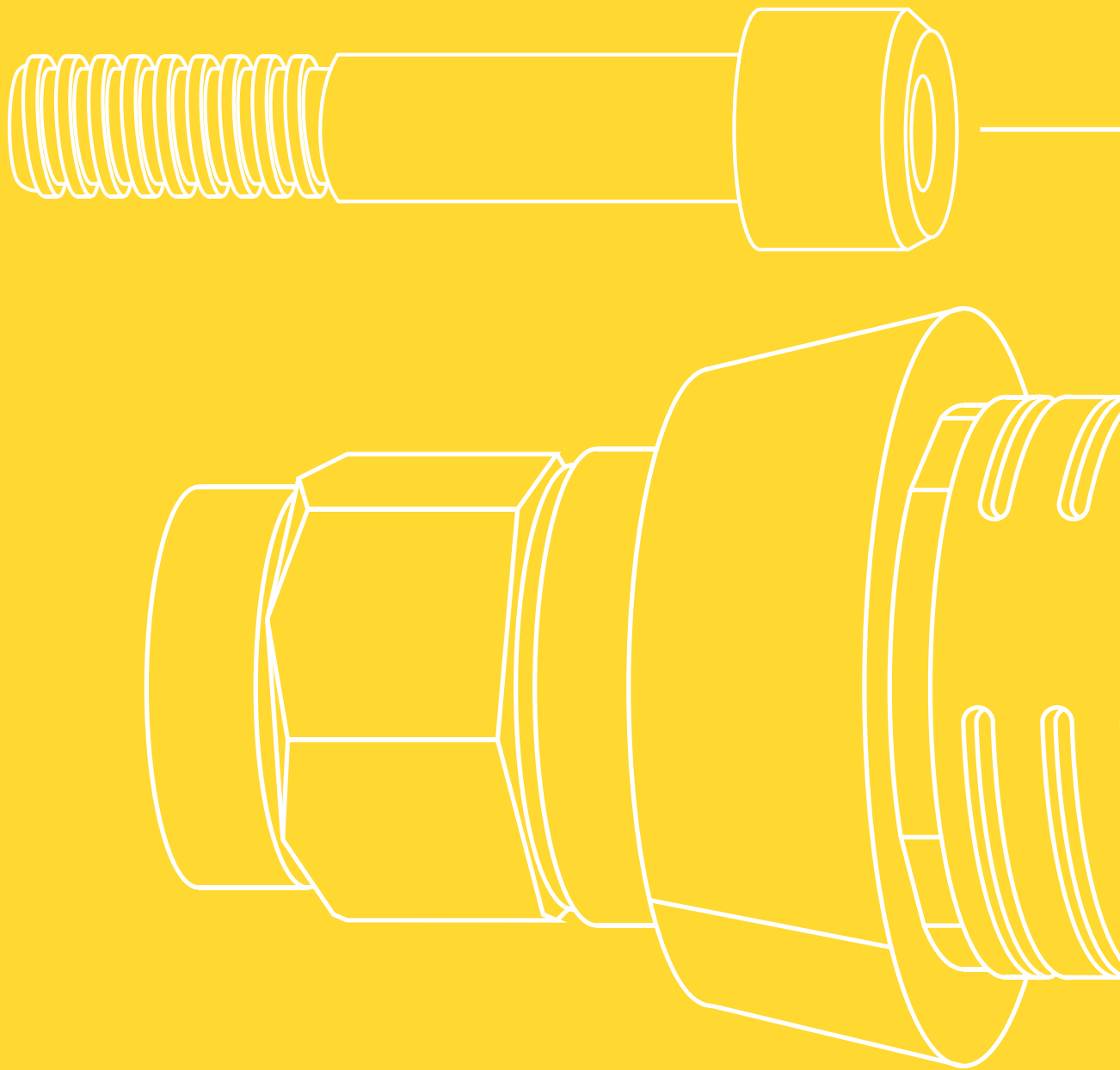


**petrol line.33**

## COMPATIBLE WITH :

NOBEL ACTIVE® implants	_____	<b>45</b>
Bredent Blue Sky® implants	_____	<b>50</b>
Implantium-Dentium® implants	_____	<b>56</b>
Megagen anyridge series® implants	_____	<b>62</b>
Brannemark/3I External Hex Standard platform	_____	<b>68</b>

# implant works



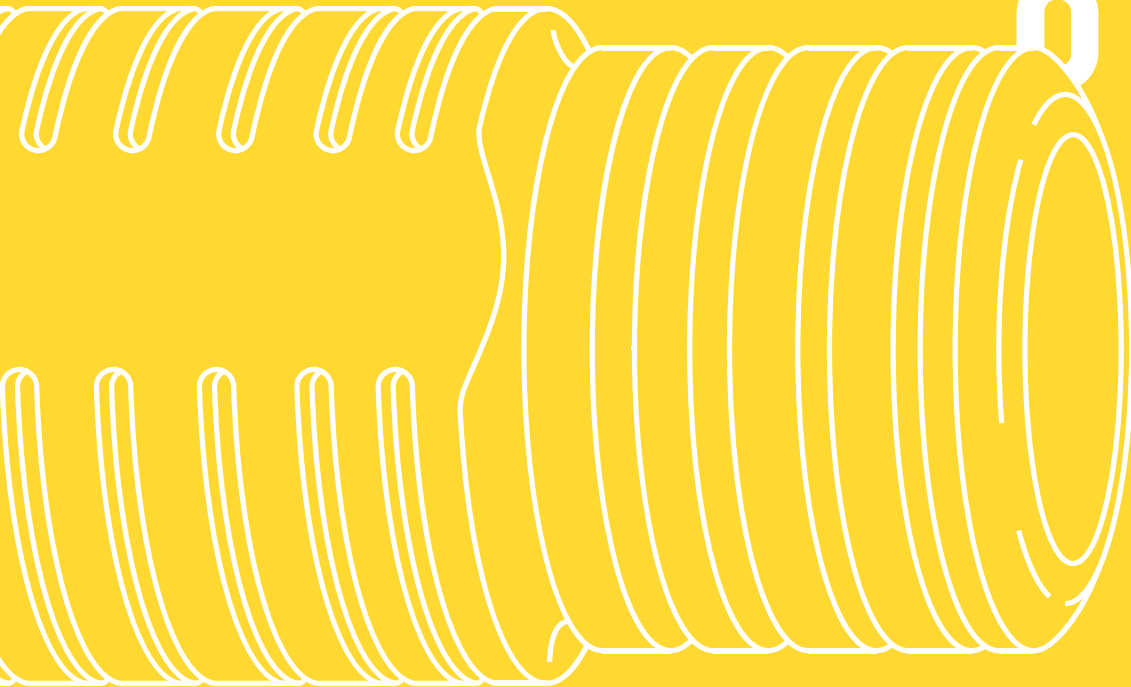
# Yellow Line.1

Prosthetic components compatible with  
**XIVE FRIALIT® DENTSPLY implants**



01.100

01.



# Yellow Line.1

Titanium grade 5

Prosthetic components compatible with  
XIVE FRIALIT® DENTSPLY implants

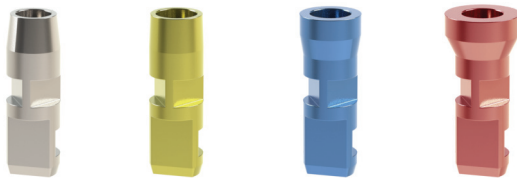
## Healing Screws.



Ref. Number    Diameter  $\varnothing$     Height (mm)

01.340.403	3,4	3
01.340.405	3,4	5
01.380.403	3,8	3
01.380.405	3,8	5
01.450.403	4,5	3
01.450.405	4,5	5
01.550.403	5,5	3
01.550.405	5,5	5

## Lab Analogs.

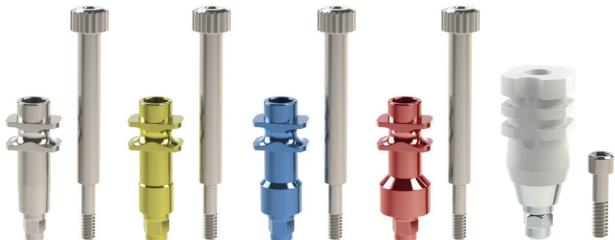


Ref. Number    Diameter  $\varnothing$

01.340.200	3,4
01.380.200	3,8
01.450.200	4,5
01.550.200	5,5

\* Novamind Lab Analogs can be used either on PLASTER MODEL or on 3D PRINTED MODEL (Digital Analog)

## Impression Posts.



Ref. Number    Diameter  $\varnothing$     Impression Method

01.340.500	3,4	Open Tray
01.340.550	3,4	Closed Tray
01.380.500	3,8	Open Tray
01.380.550	3,8	Closed Tray
01.450.500	4,5	Open Tray
01.450.550	4,5	Closed Tray
01.550.500	5,5	Open Tray
01.550.550	5,5	Closed Tray

◆ Screw Ref. Number: Open Tray 01.500.100  
Closed tray: 01.100

## Scan Bodies.



Ref. Number    Diameter  $\varnothing$

01.340.SA	3,4
01.380.SA	3,8
01.450.SA	4,5
01.550.SA	5,5

◆ Screw Ref. Number: 01.100

\* Novamind Scan Bodies are used only in combination to Novamind Free Libraries either with Novamind TI-BASES or directly on implant restorative platforms. Scan Bodies are made of peek and are easily scanned with intra-oral and desktop scanners.

# Yellow Line.1

Prosthetic components compatible with  
XIVE FRIALIT® DENTSPLY implants

## Ti-Bases.



\* Novamind TI-BASES are colored with a warm Golden Hue for better aesthetic effect. They are available in two types, with and without antirotation depending on the type of restoration (crown or bridge)

Anti-Rotation

No Anti-rotation

Ref. Number    Diameter  $\varnothing$     Gingiva Height (mm)

	01.340.600.05	3,4	0,5
	01.340.600.15	3,4	1,5
	01.340.601.05	3,4	0,5
	01.340.601.15	3,4	1,5
	01.380.600.05	3,8	0,5
	01.380.600.15	3,8	1,5
	01.380.601.05	3,8	0,5
	01.380.601.15	3,8	1,5
	01.450.600.05	4,5	0,5
	01.450.600.15	4,5	1,5
	01.450.601.05	4,5	0,5
	01.450.601.15	4,5	1,5
	01.550.600.05	5,5	0,5
	01.550.600.15	5,5	1,5
	01.550.601.05	5,5	0,5
	01.550.601.15	5,5	1,5

Screw Ref. Number: 01100

## Titanium Abutments for cemented restorations.



Ref. Number    Diameter  $\varnothing$     Angulation Degrees(°)    Gingiva Height (mm)

01.340.00.120	3,4	0 °	1,2
01.340.00.270	3,4	0 °	2,7
01.340.00.370	3,4	0 °	3,7
01.340.17.120	3,4	17 °	1,2
01.340.17.270	3,4	17 °	2,7
01.340.17.370	3,4	17 °	3,7
01.380.00.120	3,8	0 °	1,2
01.380.00.270	3,8	0 °	2,7
01.380.00.370	3,8	0 °	3,7
01.380.17.120	3,8	17 °	1,2
01.380.17.270	3,8	17 °	2,7
01.380.17.370	3,8	17 °	3,7
01.450.00.120	4,5	0 °	1,2
01.450.00.270	4,5	0 °	2,7
01.450.00.370	4,5	0 °	3,7
01.450.17.120	4,5	17 °	1,2
01.450.17.270	4,5	17 °	2,7
01.450.17.370	4,5	17 °	3,7
01.550.00.120	5,5	0 °	1,2
01.550.00.270	5,5	0 °	2,7
01.550.00.370	5,5	0 °	3,7
01.550.17.120	5,5	17 °	1,2
01.550.17.270	5,5	17 °	2,7
01.550.17.370	5,5	17 °	3,7

Screw Ref. Number: 01100

# Yellow Line.1

Titanium grade 5

Prosthetic components compatible with  
XIVE FRIALIT® DENTSPLY implants

## Castable Abutments.

Ref. Number Diameter  $\varnothing$



\* Two types of castable abutments are available. One is fully plastic and one is with pre-fabricated Co-Cr Implant connection for cast-on.

Anti-Rotation

No Anti-rotation

	01.340.300		3,4
	01.340.301		3,4
	01.340.710		3,4
	01.340.711		3,4
	01.380.300		3,8
	01.380.301		3,8
	01.380.710		3,8
	01.380.711		3,8
	01.450.300		4,5
	01.450.301		4,5
	01.450.710		4,5
	01.450.711		4,5
	01.550.300		5,5
	01.550.301		5,5
	01.550.710		5,5
	01.550.711		5,5

Screw Ref. Number: 01:100 / 01:100PL

## Overdenture Over-Lock Abutments.

Ref. Number Diameter  $\varnothing$  Height (mm)



\* Over-Locks are compatible to locator abutments for overdentures. 5 different Heights.

01.340.801		3,4	1
01.340.802		3,4	2
01.340.803		3,4	3
01.340.804		3,4	4
01.340.805		3,4	5
01.380.801		3,8	1
01.380.802		3,8	2
01.380.803		3,8	3
01.380.804		3,8	4
01.380.805		3,8	5
01.450.801		4,5	1
01.450.802		4,5	2
01.450.803		4,5	3
01.450.804		4,5	4

# Yellow Line.1

Prosthetic components compatible with XIVE FRIALIT® DENTSPLY implants

## Overlock Standard Retention Kit.

Description

Reference Number



Metal Housing	MH800
Black Lab Plastic	PL.800.BLACK
Blue Plastic Light Retention 0.68 KG	PL.800.BLUE
Grey Plastic Medium Retention 1.36 KG	PL.800.GREY
Clear Plastic Strong Retention 2.26 KG	PL.800.CLEAR

\* Available either as a set or individually. They are used in cases where the total angulation axis among implants does not exceed 15°.

## Overlock Extended Retention Kit with no Core.

Description

Reference Number



Metal Housing	MH800
Black Lab Plastic	PL.800.BLACK
Red Plastic Light Retention 0.68 KG	PL.800.RED
Orange Plastic Medium Retention 1.36 KG	PL.800.ORANGE
Green Plastic Strong Retention 2.26 KG	PL.800.GREEN

\* Available either as a set or individually. They are used in cases where the total angulation axis among implants exceeds 15°.

## Titanium Temporary Cylinders.

Ref. Number

Diameter ∅



	01.340.900	3.4
	01.340.901	3.4
	01.380.900	3.8
	01.380.901	3.8
	01.450.900	4.5
	01.450.901	4.5
	01.550.900	5.5
	01.550.901	5.5

Anti-Rotation  
 No Anti-rotation

Screw Ref. Number: 01.100


\* Chairside use or indirect in lab. With and without antirotation depending on the type of restoration (crown or bridge). Golden warm hue for better aesthetics.

# Yellow Line.1

Titanium grade 5

Prosthetic components compatible with  
XIVE FRIALIT® DENTSPLY implants

## Multi-Unit Abutments.

	Ref. Number	Diameter $\varnothing$	Angulation Degrees(°)	Gingiva Height (mm)
	MU.01.340.00.100	3,4	0°	1,0
	MU.01.340.00.200	3,4	0°	2,0
	MU.01.340.00.300	3,4	0°	3,0
	MU.01.340.00.400	3,4	0°	4,0
	MU.01.380.00.100	3,8	0°	1,0
	MU.01.380.00.200	3,8	0°	2,0
	MU.01.380.00.300	3,8	0°	3,0
	MU.01.380.00.400	3,8	0°	4,0
	MU.01.450.00.100	4,5	0°	1,0
	MU.01.450.00.200	4,5	0°	2,0
	MU.01.450.00.300	4,5	0°	3,0
	MU.01.450.00.400	4,5	0°	4,0

\* Multi-unit abutments is currently the most accepted and highly recommended solution in screw retained restorations. They have many advantages such as a common prosthetic platform for all implants.

## Multi-Unit Prosthetic System.

	Description	Reference Number	
	Healing Screw	MU.402	
	Impression Post Open Tray	MU.500	
	Scan Abutment	MU.SA	
	Lab Analog	MU.200	
	Plastic Castable	MU.301	
	Ti-Base	MU.601	
	Titanium Temporary Cylinder	MU.901	
	<p>◆ <b>Screw Ref. Number:</b> MU.500:100 MU.100</p>		

\* Multi-Unit has its own prosthetic components, the same for all implant systems.



Titanium Grade 5



# Orange Line.2

Prosthetic components compatible with  
**STRAUMANN SOFT TISSUE LEVEL RN  
SYSTEM® implants**

# Orange Line.2

Titanium grade 5

Prosthetic components compatible with  
**STRAUMANN SOFT TISSUE LEVEL® RN SYSTEM implants**

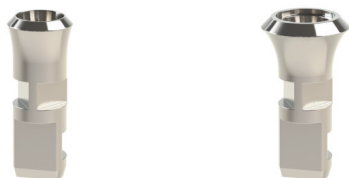
## Healing Screws.



Ref. Number    Diameter  $\varnothing$     Height (mm)

02.480.402	4.8	2
02.480.403	4.8	3
02.480.404	4.8	4
02.480.405	4.8	5
02.650.402	6.5	2
02.650.403	6.5	3
02.650.404	6.5	4

## Lab Analogs.



Ref. Number    Diameter  $\varnothing$

02.480.200	4.8
02.650.200	6.5

**\* Only one lab analog for both methods (impression or scanning)**

## Impression Posts.



Ref. Number    Diameter  $\varnothing$     Impression Method

02.480.500	4.8	Open Tray
02.480.550	4.8	Closed Tray
02.650.500	6.5	Open Tray
02.650.550	6.5	Closed Tray

**◆ Screw Ref. Number:** Open Tray: 02.500.100  
Closed Tray: 02.100

## Scan Bodies.



Ref. Number    Diameter  $\varnothing$

02.480.SA	4.8
02.650.SA	6.5

**◆ Screw Ref. Number:** 02.100CAD/CAM

**\* Novamind scan bodies are used only in combination to novamind free libraries either with novamind ti-bases or directly on implant restorative platforms. Scan Bodies are made of peek and are easily scanned with intra-oral and desktop scanners.**



Prosthetic components compatible with  
**STRAUMANN SOFT TISSUE LEVEL® RN SYSTEM implants**

## Ti-Bases.



Ref. Number    Diameter  $\varnothing$     Gingiva Height (mm)

	02.480.600.05	4,8	0,5
	02.480.600.15	4,8	1,5
	02.480.601.05	4,8	0,5
	02.480.601.15	4,8	1,5
	02.650.600.05	6,5	0,5
	02.650.600.15	6,5	1,5
	02.650.601.05	6,5	0,5
	02.650.601.15	6,5	1,5

\* Novamind TI-BASES are colored with a warm Golden Hue for better aesthetic effect. They are available in two types, with and without antirotation depending on the type of restoration (crown or bridge)

Screw Ref. Number: 02.100.IN

Anti-Rotation

No Anti-rotation

## Titanium Abutments for cemented restorations.



Ref. Number    Diameter  $\varnothing$     Angulation Degrees(°)

02.480.00	4,8	0°
02.480.17A*	4,8	17°
02.480.17B**	4,8	17°
02.480.23A*	4,8	23°
02.480.23B**	4,8	23°
02.650.00	6,5	0°
02.650.17A*	6,5	17°
02.650.17B**	6,5	17°

\* Available in different degrees of angulation 0°, 17°, 23°. Two different angulation options.

Screw Ref. Number: 02.100

\* Angulation towards the side of the octagon

\*\* Angulation towards the corner of the octagon

# Orange Line.2

Titanium grade 5

Prosthetic components compatible with  
**STRAUMANN SOFT TISSUE LEVEL® RN SYSTEM implants**

## Titanium Solid One Piece Abutments for Cemented Restorations.

Ref. Number    Diameter  $\varnothing$     Height (mm)



02.480.40	4.8	4
02.480.55	4.8	5.5
02.480.70	4.8	7
02.480.90	4.8	9

\* Available in 4 different Heights


## Castable Abutments.

Ref. Number    Diameter  $\varnothing$



 02.480.300	4.8
 02.480.301	4.8
 02.480.710	4.8
 02.480.711	4.8
 02.650.300	6.5
 02.650.301	6.5
 02.650.710	6.5
 02.650.711	6.5

 Anti-Rotation

 No Anti-rotation

◆ **Screw Ref. Number:** 02.100.P-PL  
02.100.IN

\* Two types of castable abutments are available. One is fully plastic and one is with pre-fabricated Co-Cr implant connection for cast-on.

## Overdenture Over-Lock Abutments.

Ref. Number    Diameter  $\varnothing$     Height (mm)



02.480.801	4.8	1
02.480.802	4.8	2
02.480.803	4.8	3
02.480.804	4.8	4
02.480.805	4.8	5

\* Over-Locks are compatible to locator abutments for overdentures. 5 different Heights.

Prosthetic components compatible with  
**STRAUMANN SOFT TISSUE LEVEL® RN SYSTEM implants**

## Overlock Standard Retention Kit.

Description

Reference Number



\* Available either as a set or individually. They are used in cases where the total angulation axis among implants does not exceed 15°.

Metal Housing	MH800
Black Lab Plastic	PL.800.BLACK
Blue Plastic Light Retention 0.68 KG	PL.800.BLUE
Grey Plastic Medium Retention 1.36 KG	PL.800.GREY
Clear Plastic Strong Retention 2.26 KG	PL.800.CLEAR

## Overlock Extended Retention Kit with no Core.

Description

Reference Number



\* Available either as a set or individually. They are used in cases where the total angulation axis among implants exceeds 15°.

Metal Housing	MH800
Black Lab Plastic	PL.800.BLACK
Red Plastic Light Retention 0.68 KG	PL.800.RED
Orange Plastic Medium Retention 1.36 KG	PL.800.ORANGE
Green Plastic Strong Retention 2.26 KG	PL.800.GREEN

## Overdenture Ball Abutments.

Ref. Number

Diameter  $\varnothing$ 

Height (mm)



02.480.851	4.8	1
02.480.853	4.8	3

\* Ball Abutments for overdentures. Available in 2 different heights. Ball Diameter 2.5mm.

## Ball Abutment Retention Kit.

Description

Reference Number



\* Available either as a set or individually.

Metal Housing	MH850
Pink Plastic Light Retention	PL.850.PINK
Clear Plastic Strong Retention	PL.850.CLEAR

# Orange Line.2

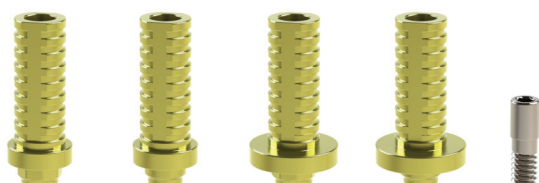
Titanium grade 5

Prosthetic components compatible with  
**STRAUMANN SOFT TISSUE LEVEL® RN SYSTEM implants**

## Titanium Temporary Cylinders.

Ref. Number

Diameter  $\varnothing$



02.480.900

4.8

02.480.901

4.8

02.650.900

6.5

02.650.901

6.5

◆ Screw Ref. Number: 02100



Anti-Rotation

No Anti-rotation

\* Chairside use or indirect in lab. With and without antirotation depending on the type of restoration (crown or bridge). Golden warm hue for better aesthetics.

## Synocta Type Screw Retained Abutment System.

Ref. Number

Diameter  $\varnothing$

Height (mm)



MU.02.480.00

4.8

1.5

## Plastic Castables for Synocta Type Screw Retained Abutment.

Ref. Number

Diameter  $\varnothing$



MU.02.480.300

4.8

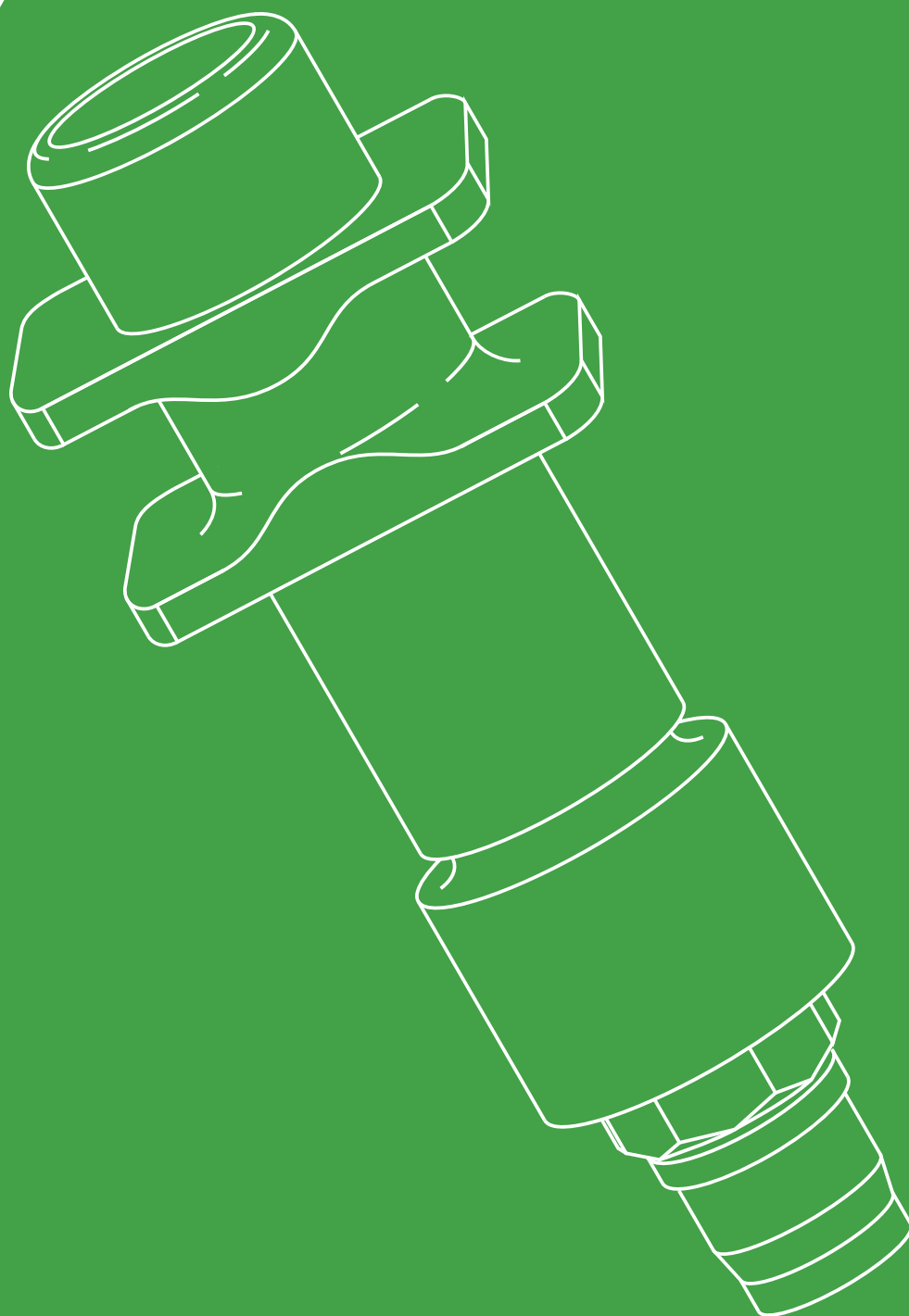
MU.02.480.301

4.8

◆ Screw Ref. Number: MU.02.480.100



Titanium Grade 5



03.500.100

# Green Line.3

Prosthetic components compatible with  
**BIOMET 3i CERTAIN® implants**

# Green Line.3

Titanium grade 5

Prosthetic components compatible with BIOMET 3i CERTAIN® implants

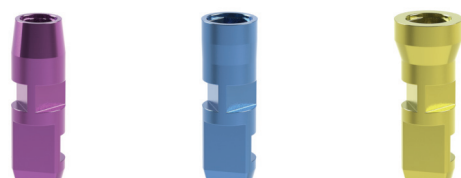
## Healing Screws.



Ref. Number Diameter  $\varnothing$  Height (mm)

03.340.403	3.4	3
03.340.405	3.4	5
03.410.403	4.1	3
03.410.405	4.1	5
03.500.403	5.0	3
03.500.405	5.0	5

## Lab Analogs.



Ref. Number Diameter  $\varnothing$

03.340.200	3.4
03.410.200	4.1
03.500.200	5.0

\* Only one lab analog for both methods (impression or scanning)

## Impression Posts.



Ref. Number Diameter  $\varnothing$  Impression Method

03.340.500	3.4	Open Tray
03.340.550	3.4	Closed Tray
03.410.500	4.1	Open Tray
03.410.550	4.1	Closed Tray
03.500.500	5.0	Open Tray
03.500.550	5.0	Closed Tray

◆ Screw Ref. Number: Open Tray: 03.500.100  
Closed Tray: 03.100

## Scan Bodies.



Ref. Number Diameter  $\varnothing$

03.340.SA	3.4
03.410.SA	4.1
03.500.SA	5.0

◆ Screw Ref. Number: 03.100

\* Novamind scan bodies are used only in combination to novamind free libraries either with novamind ti-bases or directly on implant restorative platforms. Scan Bodies are made of peek and are easily scanned with intra-oral and desktop scanners.

Prosthetic components compatible with BIOMET 3i CERTAIN® implants

## Ti-Bases.



\* Novamind TI-BASES are colored with a warm Golden Hue for better aesthetic effect. They are available in two types, with and without antirotation depending on the type of restoration (crown or bridge)

	Ref. Number	Diameter $\varnothing$	Gingiva Height (mm)
	03.340.600.05	3,4	0,5
	03.340.600.15	3,4	1,5
	03.340.601.05	3,4	0,5
	03.340.601.15	3,4	1,5
	03.410.600.05	4,1	0,5
	03.410.600.15	4,1	1,5
	03.410.601.05	4,1	0,5
	03.410.601.15	4,1	1,5
	03.500.600.05	5,0	0,5
	03.500.600.15	5,0	1,5
	03.500.601.05	5,0	0,5
	03.500.601.15	5,0	1,5

Screw Ref. Number: 03.100

Anti-Rotation

No Anti-rotation

## Titanium Abutments for Cemented Restorations.



\* Available in different degrees of angulation 0°, 17°, and in some cases 23°. Three different gingiva height collars to optimize the best possible emergence profile.

Ref. Number	Diameter $\varnothing$	Angulation Degrees(°)	Gingiva Height (mm)
03.340.00.120	3,4	0 °	1,2
03.340.00.270	3,4	0 °	2,7
03.340.00.370	3,4	0 °	3,7
03.340.17.120	3,4	17 °	1,2
03.340.17.270	3,4	17 °	2,7
03.340.17.370	3,4	17 °	3,7
03.410.00.120	4,1	0 °	1,2
03.410.00.270	4,1	0 °	2,7
03.410.00.370	4,1	0 °	3,7
03.410.17.120	4,1	17 °	1,2
03.410.17.270	4,1	17 °	2,7
03.410.17.370	4,1	17 °	3,7
03.500.00.120	5,0	0 °	1,2
03.500.00.270	5,0	0 °	2,7
03.500.00.370	5,0	0 °	3,7
03.500.17.120	5,0	17 °	1,2
03.500.17.270	5,0	17 °	2,7
03.500.17.370	5,0	17 °	3,7

Screw Ref. Number: 03.100

# Green Line.3

Titanium grade 5

Prosthetic components compatible with BIOMET 3i CERTAIN® implants

## Castable Abutments.

Ref. Number Diameter  $\varnothing$



\* Two types of castable abutments are available. One is fully plastic and one is with pre-fabricated Co-Cr implant connection for cast-on.

	03.340.300	3,4
	03.340.301	3,4
	03.340.710	3,4
	03.340.711	3,4
	03.410.300	4,1
	03.410.301	4,1
	03.410.710	4,1
	03.410.711	4,1
	03.500.300	5,0
	03.500.301	5,0
	03.500.710	5,0
	03.500.711	5,0

Anti-Rotation  
 No Anti-rotation

Screw Ref. Number: 03.100 / 03.100PL

## Overdenture Over-Lock Abutments.

Ref. Number Diameter  $\varnothing$  Height (mm)



\* Over-Locks are compatible to locator abutments for overdentures. 4 different Heights.

03.340.801	3,4	1
03.340.802	3,4	2
03.340.803	3,4	3
03.340.804	3,4	4
03.410.801	4,1	1
03.410.802	4,1	2
03.410.803	4,1	3
03.410.804	4,1	4
03.500.801	5,0	1
03.500.802	5,0	2
03.500.803	5,0	3
03.500.804	5,0	4

## Overlock Standard Retention Kit.

Description

Reference Number



\* Available either as a set or individually. They are used in cases where the total angulation axis among implants does not exceed 15°.

Metal Housing	MH800
Black Lab Plastic	PL.800.BLACK
Blue Plastic Light Retention 0.68 KG	PL.800.BLUE
Grey Plastic Medium Retention 1.36 KG	PL.800.GREY
Clear Plastic Strong Retention 2.26 KG	PL.800.CLEAR



Prosthetic components compatible with  
**BIOMET 3i CERTAIN® implants**

## Overlock Extended Retention Kit with no Core.

Description

Reference Number



- \* Available either as a set or individually. They are used in cases where the total angulation axis among implants exceeds 15°.

Metal Housing	MH800
Black Lab Plastic	PL.800.BLACK
Red Plastic Light Retention 0.68 KG	PL.800.RED
Orange Plastic Medium Retention 1.36 KG	PL.800.ORANGE
Green Plastic Strong Retention 2.26 KG	PL.800.GREEN

## Titanium Temporary Cylinders.

Ref. Number

Diameter  $\varnothing$ 

	03.340.900		3,4
	03.340.901		3,4
	03.410.900		4,1
	03.410.901		4,1
	03.500.900		5,0
	03.500.901		5,0



Anti-Rotation



No Anti-rotation

Screw Ref. Number: 03.100

- \* Chairside use or indirect in lab. With and without antirotation depending on the type of restoration (crown or bridge). Golden warm hue for better aesthetics.

## Multi-Unit Abutments.

Ref. Number

Diameter  $\varnothing$ Angulation  
Degrees(°)Gingiva  
Height (mm)

MU.03.340.00.100		3,4	0 °	1.0
MU.03.340.00.200		3,4	0 °	2.0
MU.03.340.00.300		3,4	0 °	3.0
MU.03.340.00.400		3,4	0 °	4.0
MU.03.410.00.100		4,1	0 °	1.0
MU.03.410.00.200		4,1	0 °	2.0
MU.03.410.00.300		4,1	0 °	3.0
MU.03.410.00.400		4,1	0 °	4.0
MU.03.500.00.100		5,0	0 °	1.0
MU.03.500.00.200		5,0	0 °	2.0
MU.03.500.00.300		5,0	0 °	3.0
MU.03.500.00.400		5,0	0 °	4.0

- \* Multi-unit abutments is currently the most accepted and highly recommended solution in screw retained restorations. They have many advantages such as a common prosthetic platform for all implants.

# Green Line.3

Titanium grade 5

Prosthetic components compatible with  
BIOMET 3i CERTAIN® implants

## Multi-Unit Prosthetic System.

Description

Reference Number



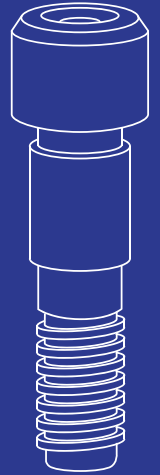
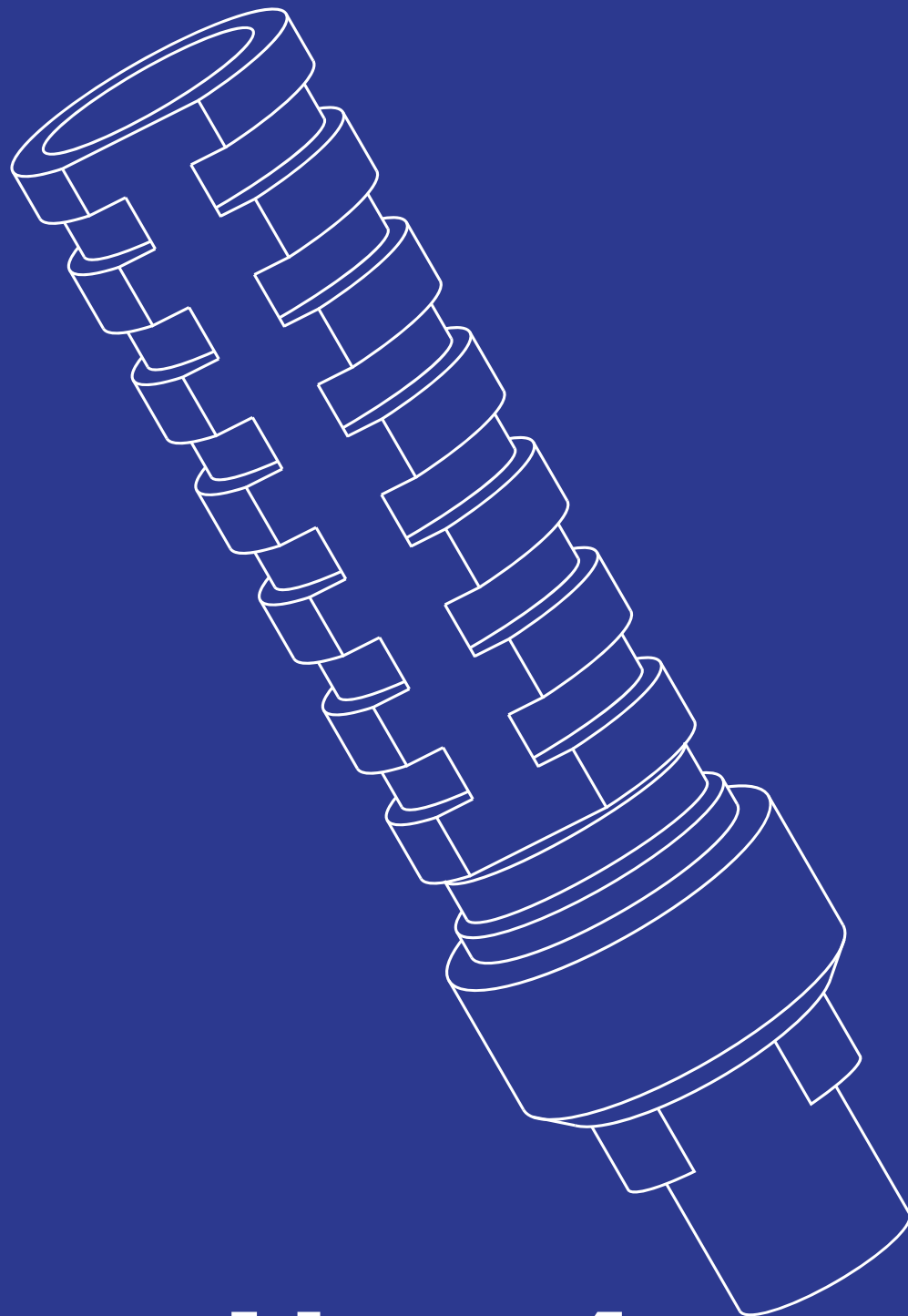
Healing Screw	MU.402
Impression Post Open Tray	MU.500
Scan Abutment	MU.SA
Lab Analog	MU.200
Plastic Castable	MU.301
Ti-Base	MU.601
Titanium Temporary Cylinder	MU.901

◆ **Screw Ref. Number:** MU.500.100  
MU.100

\* Multi-Unit has its own prosthetic components, the same for all implant systems.



Titanium Grade 5



04.350.100

# Blue Line.4

Prosthetic components compatible with  
**NOBEL REPLACE SELECT® implants**

# Blue Line.4

Titanium grade 5

Prosthetic components compatible with  
NOBEL REPLACE SELECT® implants

## Healing Screws.



Ref. Number Diameter  $\varnothing$  Height (mm)

04.350.403	3.5	3
04.350.405	3.5	5
04.430.403	4.3	3
04.430.405	4.3	5
04.500.403	5.0	3
04.500.405	5.0	5

## Lab Analogs.



Ref. Number Diameter  $\varnothing$

04.350.200	3.5
04.430.200	4.3
04.500.200	5.0

\* Only one lab analog for both methods  
(impression or scanning)

## Impression Posts.



Ref. Number Diameter  $\varnothing$  Impression Method

04.350.500	3.5	Open Tray
04.350.550	3.5	Closed Tray
04.430.500	4.3	Open Tray
04.430.550	4.3	Closed Tray
04.500.500	5.0	Open Tray
04.500.550	5.0	Closed Tray

◆ Screw Ref. Number:

Open Tray: 04.350.500.100 / 04.430/500.500.100

Closed Tray: 04.350.100 / 04.430/500.100

## Scan Bodies.



Ref. Number Diameter  $\varnothing$

04.350.SA	3.5
04.430.SA	4.3
04.500.SA	5.0

◆ Screw Ref. Number: 04.350.100

04.430/500.100

\* Novamind scan bodies are used only in combination to novamind free libraries either with novamind ti-bases or directly on implant restorative platforms. Scan Bodies are made of peek and are easily scanned with intra-oral and desktop scanners.

Prosthetic components compatible with  
**NOBEL REPLACE SELECT® implants**

## Ti-Bases.



	Ref. Number	Diameter $\varnothing$	Gingiva Height (mm)
	04.350.600.05	3,5	0,5
	04.350.600.15	3,5	1,5
	04.350.601.05	3,5	0,5
	04.350.601.15	3,5	1,5
	04.430.600.05	4,3	0,5
	04.430.600.15	4,3	1,5
	04.430.601.05	4,3	0,5
	04.430.601.15	4,3	1,5
	04.500.600.05	5,0	0,5
	04.500.600.15	5,0	1,5
	04.500.601.05	5,0	0,5
	04.500.601.15	5,0	1,5

Anti-Rotation  
 No Anti-rotation

\* Novamind TI-BASES are colored with a warm Golden Hue for better aesthetic effect. They are available in two types, with and without antirotation depending on the type of restoration (crown or bridge)

**Screw Ref. Number:** 04.350.100IN  
04.430/500.100

## Titanium Abutments for Cemented Restorations.



	Ref. Number	Diameter $\varnothing$	Angulation Degrees(°)	Gingiva Height (mm)
	04.350.00.120	3,5	0 °	1,2
	04.350.00.270	3,5	0 °	2,7
	04.350.00.370	3,5	0 °	3,7
	04.350.17.120	3,5	17 °	1,2
	04.350.17.270	3,5	17 °	2,7
	04.350.17.370	3,5	17 °	3,7
	04.430.00.120	4,3	0 °	1,2
	04.430.00.270	4,3	0 °	2,7
	04.430.00.370	4,3	0 °	3,7
	04.430.17.120	4,3	17 °	1,2
	04.430.17.270	4,3	17 °	2,7
	04.430.17.370	4,3	17 °	3,7
	04.500.00.120	5,0	0 °	1,2
	04.500.00.270	5,0	0 °	2,7
	04.500.00.370	5,0	0 °	3,7
	04.500.17.120	5,0	17 °	1,2
	04.500.17.270	5,0	17 °	2,7
	04.500.17.370	5,0	17 °	3,7

\* Available in different degrees of angulation 0°, 17°, and in some cases 23°. Three different gingiva height collars to optimize the best possible emergence profile.

**Screw Ref. Number:** 04.350.100  
04.430/500.100

# Blue Line.4

Titanium grade 5

Prosthetic components compatible with  
NOBEL REPLACE SELECT® implants

## Castable Abutments.



\* Two types of castable abutments are available. One is fully plastic and one is with pre-fabricated Co-Cr implant connection for cast-on.

	Ref. Number	Diameter ∅
⊕R	04.350.300	3.5
⊕R	04.350.301	3.5
⊕R	04.350.710	3.5
⊕R	04.350.711	3.5
⊕R	04.430.300	4.3
⊕R	04.430.301	4.3
⊕R	04.430.710	4.3
⊕R	04.430.711	4.3
⊕R	04.500.300	5.0
⊕R	04.500.301	5.0
⊕R	04.500.710	5.0
⊕R	04.500.711	5.0

⊕R Anti-Rotation  
⊕R No Anti-rotation

◆ Screw Ref. Number: 04.350.100  
04.430/500.100

## Overdenture Over-Lock Abutments.



\* Over-Locks are compatible to locator abutments for overdentures. 4 different Heights.

Ref. Number	Diameter ∅	Height (mm)
04.350.801	3.5	1
04.350.802	3.5	2
04.350.803	3.5	3
04.350.804	3.5	4
04.430.801	4.3	1
04.430.802	4.3	2
04.430.803	4.3	3
04.430.804	4.3	4
04.500.801	5.0	1
04.500.802	5.0	2
04.500.803	5.0	3
04.500.804	5.0	4

## Overlock Standard Retention Kit.



\* Available either as a set or individually. They are used in cases where the total angulation axis among implants does not exceed 15°.

Description	Reference Number
Metal Housing	MH800
Black Lab Plastic	PL.800.BLACK
Blue Plastic Light Retention 0.68 KG	PL.800.BLUE
Grey Plastic Medium Retention 1.36 KG	PL.800.GREY
Clear Plastic Strong Retention 2.26 KG	PL.800.CLEAR

Prosthetic components compatible with  
**NOBEL REPLACE SELECT® implants**

## Overlock Extended Retention Kit with no Core.

Description

Reference Number



\* Available either as a set or individually. They are used in cases where the total angulation axis among implants exceeds 15°.

Metal Housing	MH800
Black Lab Plastic	PL.800.BLACK
Red Plastic Light Retention 0.68 KG	PL.800.RED
Orange Plastic Medium Retention 1.36 KG	PL.800.ORANGE
Green Plastic Strong Retention 2.26 KG	PL.800.GREEN

## Titanium Temporary Cylinders.

Ref. Number

Diameter  $\varnothing$



04.350.900	3.5	Anti-Rotation
04.350.901	3.5	No Anti-rotation
04.430.900	4.3	Anti-Rotation
04.430.901	4.3	No Anti-rotation
04.500.900	5.0	Anti-Rotation
04.500.901	5.0	No Anti-rotation



Anti-Rotation

No Anti-rotation

**Screw Ref. Number:** 04.350.100  
04.430/500.100

\* Chairside use or indirect in lab. With and without antirotation depending on the type of restoration (crown or bridge). Golden warm hue for better aesthetics.

## Multi-Unit Abutments.

Ref. Number

Diameter  $\varnothing$

Angulation Degrees(°)

Gingiva Height (mm)



\* Multi-unit abutments is currently the most accepted and highly recommended solution in screw retained restorations. They have many advantages such as a common prosthetic platform for all implants.

MU.04.350.00.100	3.5	0°	1.0
MU.04.350.00.200	3.5	0°	2.0
MU.04.350.00.300	3.5	0°	3.0
MU.04.350.00.400	3.5	0°	4.0
MU.04.430.00.100	4.3	0°	1.0
MU.04.430.00.200	4.3	0°	2.0
MU.04.430.00.300	4.3	0°	3.0
MU.04.430.00.400	4.3	0°	4.0
MU.04.500.00.100	5.0	0°	1.0
MU.04.500.00.200	5.0	0°	2.0
MU.04.500.00.300	5.0	0°	3.0
MU.04.500.00.400	5.0	0°	4.0

# Blue Line.4

Titanium grade 5

Prosthetic components compatible with  
NOBEL REPLACE SELECT® implants

## Multi-Unit Prosthetic System.

Description

Reference Number



Healing Screw	MU.402
Impression Post Open Tray	MU.500
Scan Abutment	MU.SA
Lab Analog	MU.200
Plastic Castable	MU.301
Ti-Base	MU.601
Titanium Temporary Cylinder	MU.901

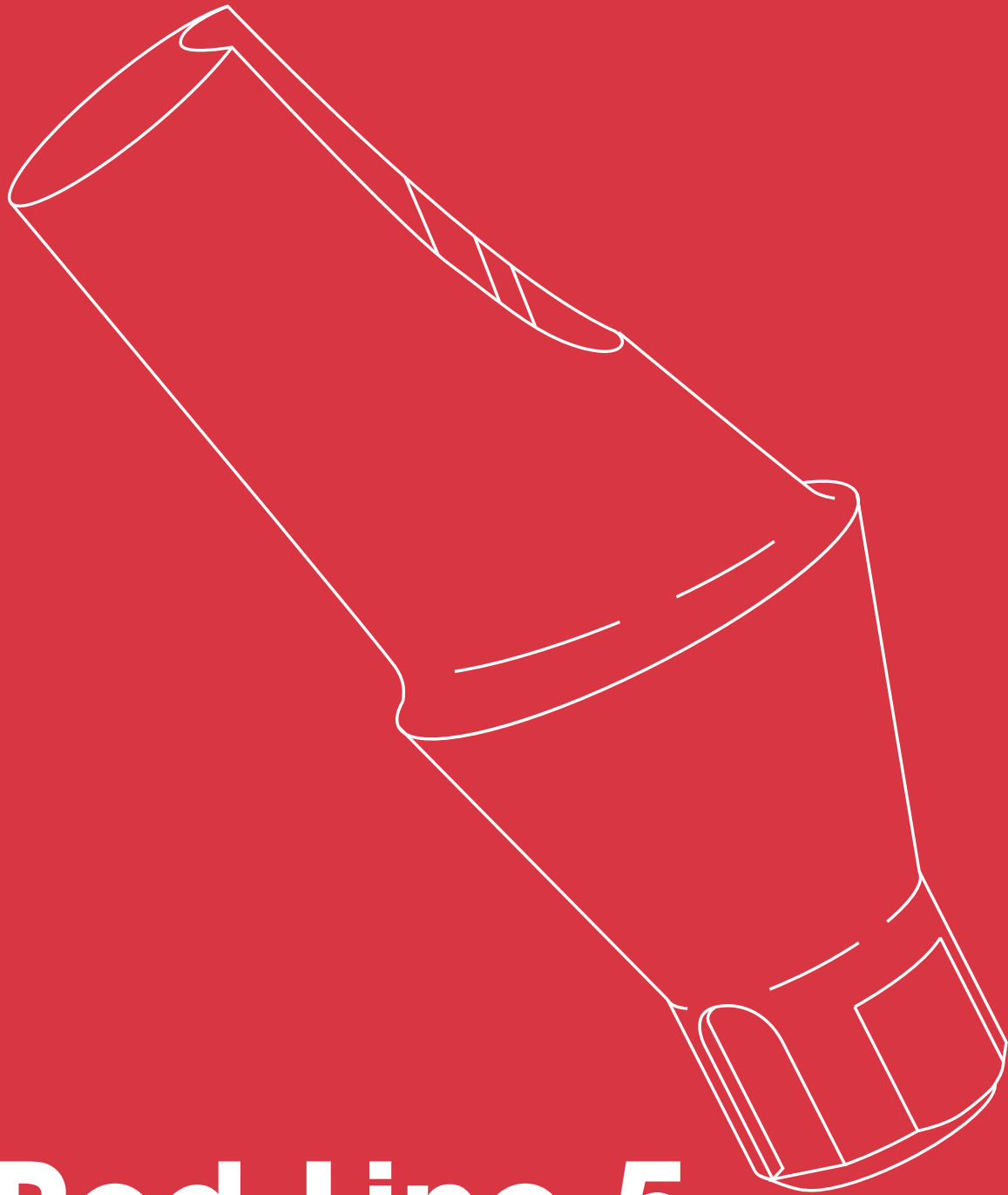
◆ **Screw Ref. Number:** MU.500.100  
MU.100

\* Multi-Unit has its own prosthetic components, the same for all implant systems.





Titanium Grade 5



05.100

# Red Line.5

Prosthetic components compatible with  
**STRAUMANN BONE LEVEL® implants**

# Red Line.5

Titanium grade 5

Prosthetic components compatible with  
STRAUMANN BONE LEVEL® implants

## Healing Screws.



Ref. Number	Diameter $\varnothing$	Height (mm)
05.330.403	3.3	3
05.330.405	3.3	5
05.410/480.403	4.1/4.8	3
05.410/480.405	4.1/4.8	5

## Lab Analogs.



Ref. Number	Diameter $\varnothing$
05.330.200	3.3
05.410/480.200	4.1/4.8

\* Only one lab analog for both methods  
(impression or scanning)

## Impression Posts.



Ref. Number	Diameter $\varnothing$	Impression Method
05.330.500	3.3	Open Tray
05.330.550	3.3	Closed Tray
05.410/480.500	4.1/4.8	Open Tray
05.410/480.550	4.1/4.8	Closed Tray

◆ Screw Ref. Number:

Open Tray: 05.330.500.100 / 05.410/480.500.100

Closed Tray 05.100

## Scan Bodies.



Ref. Number	Diameter $\varnothing$
05.330.SA	3.3
05.410/480.SA	4.1/4.8

◆ Screw Ref. Number: 05.100

\* Novamind scan bodies are used only in combination to novamind free libraries either with novamind ti-bases or directly on implant restorative platforms. Scan Bodies are made of peek and are easily scanned with intra-oral and desktop scanners.

Prosthetic components compatible with  
**STRAUMANN BONE LEVEL®** implants

## Ti-Bases.



Anti-Rotation



No Anti-rotation

Ref. Number

Diameter  $\varnothing$ 

Gingiva Height (mm)

	05.330.600.10	3.3	1
	05.330.600.20	3.3	2
	05.330.601.10	3.3	1
	05.330.601.20	3.3	2
	05.410/480.600.10	4.1/4.8	1
	05.410/480.600.20	4.1/4.8	2
	05.410/480.601.10	4.1/4.8	1
	05.410/480.601.20	4.1/4.8	2

Screw Ref. Number: 05:100

Novamind TI-BASES are colored with a warm Golden Hue for better aesthetic effect. They are available in two types, with and without antirotation depending on the type of restoration (crown or bridge)

## Titanium Abutments for Cemented Restorations.



Ref. Number

Diameter  $\varnothing$ 

Angulation Degrees(°)

Gingiva Height (mm)

05.330.00.120	3.3	0°	1.2
05.330.00.270	3.3	0°	2.7
05.330.17.120	3.3	17°	1.2
05.330.17.270	3.3	17°	2.7
05.330.23.120	3.3	23°	1.2
05.330.23.270	3.3	23°	2.7
05.410/480.00.120	4.1/4.8	0°	1.2
05.410/480.00.270	4.1/4.8	0°	2.7
05.410/480.17.120	4.1/4.8	17°	1.2
05.410/480.17.270	4.1/4.8	17°	2.7
05.410/480.23.120	4.1/4.8	23°	1.2
05.410/480.23.270	4.1/4.8	23°	2.7

Screw Ref. Number: 05:100

Available in different degrees of angulation 0°, 17°, 23°. Two different gingiva height collars to optimize the best possible emergence profile.

## Castable Abutments.



Ref. Number

Diameter  $\varnothing$ 

	05.330.300	3.3
	05.330.301	3.3
	05.330.710	3.3
	05.330.711	3.3
	05.410/480.300	4.1/4.8
	05.410/480.301	4.1/4.8
	05.410/480.710	4.1/4.8
	05.410/480.711	4.1/4.8



Anti-Rotation



No Anti-rotation



Two types of castable abutments are available. One is fully plastic and one is with pre-fabricated Co-Cr implant connection for cast-on.

Screw Ref. Number: 05:100

# Red Line.5

Titanium grade 5

Prosthetic components compatible with  
**STRAUMANN BONE LEVEL®** implants

## Overdenture Over-Lock Abutments.

Ref. Number      Diameter  $\varnothing$       Height (mm)



05.330.801	3.3	1
05.330.802	3.3	2
05.330.803	3.3	3
05.330.804	3.3	4
05.410/480.801	4.1/4.8	1
05.410/480.802	4.1/4.8	2
05.410/480.803	4.1/4.8	3
05.410/480.804	4.1/4.8	4

\* Over-Locks are compatible to locator abutments for overdentures. 4 different Heights.

## Overlock Standard Retention Kit.

Description

Reference Number



Metal Housing	MH800
Black Lab Plastic	PL.800.BLACK
Blue Plastic Light Retention 0.68 KG	PL.800.BLUE
Grey Plastic Medium Retention 1.36 KG	PL.800.GREY
Clear Plastic Strong Retention 2.26 KG	PL.800.CLEAR

\* Available either as a set or individually. They are used in cases where the total angulation axis among implants does not exceed 15°.

## Overlock Extended Retention Kit with no Core.

Description

Reference Number



Metal Housing	MH800
Black Lab Plastic	PL.800.BLACK
Red Plastic Light Retention 0.68 KG	PL.800.RED
Orange Plastic Medium Retention 1.36 KG	PL.800.ORANGE
Green Plastic Strong Retention 2.26 KG	PL.800.GREEN

\* Available either as a set or individually. They are used in cases where the total angulation axis among implants exceeds 15°.

Prosthetic components compatible with  
**STRAUMANN BONE LEVEL®** implants

## Titanium Temporary Cylinders.



\* Chairside use or indirect in lab. With and without antirotation depending on the type of restoration (crown or bridge). Golden warm hue for better aesthetics.

Ref. Number	Diameter $\varnothing$
05.330.900	3.3
05.330.901	3.3
05.410/480.900	4.1/4.8
05.410/480.901	4.1/4.8

◆ Screw Ref. Number: 05.100

Anti-Rotation

No Anti-rotation

## Multi-Unit Abutments.



\* Multi-unit abutments is currently the most accepted and highly recommended solution in screw retained restorations. They have many advantages such as a common prosthetic platform for all implants.

Ref. Number	Diameter $\varnothing$	Angulation Degrees(°)	Gingiva Height (mm)
MU.05.330.00.100	3.3	0°	1.0
MU.05.330.00.200	3.3	0°	2.0
MU.05.330.00.300	3.3	0°	3.0
MU.05.330.00.400	3.3	0°	4.0
MU.05.330.17.250	3.3	17°	2.5
MU.05.330.17.350	3.3	17°	3.5
MU.05.330.30.350	3.3	30°	3.5
MU.05.330.30.450	3.3	30°	4.5
MU.05.410/480.00.100	4.1/4.8	0°	1.0
MU.05.410/480.00.200	4.1/4.8	0°	2.0
MU.05.410/480.00.300	4.1/4.8	0°	3.0
MU.05.410/480.00.400	4.1/4.8	0°	4.0
MU.05.410/480.17.250	4.1/4.8	17°	2.5
MU.05.410/480.17.350	4.1/4.8	17°	3.5
MU.05.410/480.30.350	4.1/4.8	30°	3.5
MU.05.410/480.30.450	4.1/4.8	30°	4.5

◆ Screw Ref. Number: 05.100

# Red Line.5

Titanium grade 5

Prosthetic components compatible with  
**STRAUMANN BONE LEVEL®** implants

## Multi-Unit Prosthetic System.

Description

Reference Number



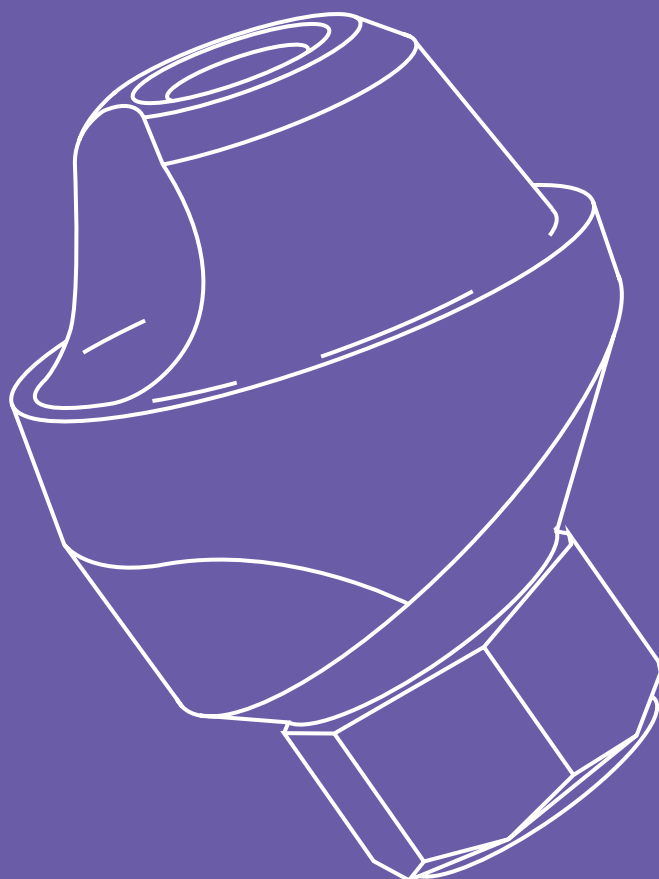
Healing Screw	MU.402
Impression Post Open Tray	MU.500
Scan Abutment	MU.SA
Lab Analog	MU.200
Plastic Castable	MU.301
Ti-Base	MU.601
Titanium Temporary Cylinder	MU.901

◆ **Screw Ref. Number:** MU.500.100  
MU.100

\* **Multi-Unit has its own prosthetic components, the same for all implant systems.**



Titanium Grade 5



# Purple Line.6

Prosthetic components compatible with  
**MIS SEVEN® implants**

# Purple Line.6

Titanium grade 5

Prosthetic components compatible with  
MIS SEVEN® implants

## Healing Screws.



Ref. Number      Diameter  $\varnothing$       Height (mm)

06.330.403	Yellow	3.3	3
06.330.405	Yellow	3.3	5
06.375.403	Purple	3.75	3
06.375.405	Purple	3.75	5
06.450.403	Green	4.5	3
06.450.405	Green	4.5	5

## Lab Analogs.



Ref. Number      Diameter  $\varnothing$

06.330.200	Yellow	3.3
06.375.200	Purple	3.75
06.450.200	Green	4.5

\* Only one lab analog for both methods  
(impression or scanning)

## Impression Posts.



Ref. Number      Diameter  $\varnothing$       Impression Method

06.330.500	Yellow	3.3	Open Tray
06.330.550	Yellow	3.3	Closed Tray
06.375.500	Purple	3.75	Open Tray
06.375.550	Purple	3.75	Closed Tray
06.450.500	Green	4.5	Open Tray
06.450.550	Green	4.5	Closed Tray

◆ Screw Ref. Number:

Open Tray 06.330.500.100 / 06.500.100

Closed Tray 06.330.100 / 06.100

## Scan Bodies.



Ref. Number      Diameter  $\varnothing$

06.330.SA	3.3
06.375.SA	3.75
06.450.SA	4.5

◆ Screw Ref. Number: 06.330.100 / 06.100


\* Novamind scan bodies are used only in combination to novamind free libraries either with novamind ti-bases or directly on implant restorative platforms. Scan Bodies are made of peek and are easily scanned with intra-oral and desktop scanners.



# Purple Line.6

Prosthetic components compatible with  
**MIS SEVEN® implants**


## Ti-Bases.

	Ref. Number	Diameter $\varnothing$	Gingiva Height (mm)	
	06.330.600.05	3,3	0,5	Ⓜ Anti-Rotation
	06.330.600.15	3,3	1,5	Ⓜ Anti-Rotation
	06.330.601.05	3,3	0,5	Ⓜ No Anti-rotation
	06.330.601.15	3,3	1,5	Ⓜ No Anti-rotation
	06.375.600.05	3,75	0,5	Ⓜ Anti-Rotation
	06.375.600.15	3,75	1,5	Ⓜ Anti-Rotation
	06.375.601.05	3,75	0,5	Ⓜ No Anti-rotation
	06.375.601.15	3,75	1,5	Ⓜ No Anti-rotation
	06.450.600.05	4,5	0,5	Ⓜ Anti-Rotation
	06.450.600.15	4,5	1,5	Ⓜ Anti-Rotation
	06.450.601.05	4,5	0,5	Ⓜ No Anti-rotation
	06.450.601.15	4,5	1,5	Ⓜ No Anti-rotation

\* Novamind TI-BASES are colored with a warm Golden Hue for better aesthetic effect. They are available in two types, with and without antirotation depending on the type of restoration (crown or bridge)

◆ Screw Ref. Number: 06.330.100 / 06.100

## Titanium Abutments for Cemented Restorations.

	Ref. Number	Diameter $\varnothing$	Angulation Degrees(°)	Gingiva Height (mm)
	06.330.00.120	3,3	0°	1,2
	06.330.00.270	3,3	0°	2,7
	06.330.00.370	3,3	0°	3,7
	06.330.17.120	3,3	17°	1,2
	06.330.17.270	3,3	17°	2,7
	06.330.17.370	3,3	17°	3,7
	06.375.00.120	3,75	0°	1,2
	06.375.00.270	3,75	0°	2,7
	06.375.00.370	3,75	0°	3,7
	06.375.17.120	3,75	17°	1,2
	06.375.17.270	3,75	17°	2,7
	06.375.17.370	3,75	17°	3,7
	06.375.23.120	3,75	23°	1,2
	06.375.23.270	3,75	23°	2,7
	06.375.23.370	3,75	23°	3,7
	06.450.00.120	4,5	0°	1,2
	06.450.00.270	4,5	0°	2,7
	06.450.00.370	4,5	0°	3,7
	06.450.17.120	4,5	17°	1,2
	06.450.17.270	4,5	17°	2,7
	06.450.17.370	4,5	17°	3,7
06.450.23.120	4,5	23°	1,2	
06.450.23.270	4,5	23°	2,7	
06.450.23.370	4,5	23°	3,7	

\* Available in different degrees of angulation 0°, 17°, and in some cases 23°. Three different gingiva height collars to optimize the best possible emergence profile.

◆ Screw Ref. Number: 06.330.100 / 06.100

# Purple Line.6

Titanium grade 5

Prosthetic components compatible with  
MIS SEVEN® implants

## Castable Abutments.



\* Two types of castable abutments are available. One is fully plastic and one is with pre-fabricated Co-Cr implant connection for cast-on.

	Ref. Number	Diameter $\varnothing$	
	06.330.300	3.3	Anti-Rotation
	06.330.301	3.3	
	06.330.710	3.3	No Anti-rotation
	06.330.711	3.3	
	06.375.300	3.75	
	06.375.301	3.75	
	06.375.710	3.75	
	06.375.711	3.75	
	06.450.300	4.5	
	06.450.301	4.5	
	06.450.710	4.5	
	06.450.711	4.5	

◆ Screw Ref. Number: 06.330.100 / 06.100

## Overdenture Over-Lock Abutments.



\* Over-Locks are compatible to locator abutments for overdentures. 5 different Heights.

Ref. Number	Diameter $\varnothing$	Height (mm)
06.330.801	3.3	1
06.330.802	3.3	2
06.330.803	3.3	3
06.330.804	3.3	4
06.375.801	3.75	1
06.375.802	3.75	2
06.375.803	3.75	3
06.375.804	3.75	4
06.375.805	3.75	5
06.375.806	3.75	6
06.450.801	4.5	1
06.450.802	4.5	2
06.450.803	4.5	3
06.450.804	4.5	4

## Overlock Standard Retention Kit.

Description Reference Number



\* Available either as a set or individually. They are used in cases where the total angulation axis among implants does not exceed 15°.

Metal Housing	MH800
Black Lab Plastic	PL.800.BLACK
Blue Plastic Light Retention 0.68 KG	PL.800.BLUE
Grey Plastic Medium Retention 1.36 KG	PL.800.GREY
Clear Plastic Strong Retention 2.26 KG	PL.800.CLEAR

# Purple Line.6

Prosthetic components compatible with  
**MIS SEVEN® implants**

## Overlock Extended Retention Kit with no Core.

Description

Reference Number



\* Available either as a set or individually. They are used in cases where the total angulation axis among implants exceeds 15°.

Metal Housing	MH800
Black Lab Plastic	PL.800.BLACK
Red Plastic Light Retention 0.68 KG	PL.800.RED
Orange Plastic Medium Retention 1.36 KG	PL.800.ORANGE
Green Plastic Strong Retention 2.26 KG	PL.800.GREEN

## Titanium Temporary Cylinders.

Ref. Number

Diameter ∅



06.330.900	3.3	Anti-Rotation
06.330.901	3.3	No Anti-rotation
06.375.900	3.75	Anti-Rotation
06.375.901	3.75	No Anti-rotation
06.450.900	4.5	Anti-Rotation
06.450.901	4.5	No Anti-rotation

Anti-Rotation  
No Anti-rotation

\* Chairside use or indirect in lab. With and without antirotation depending on the type of restoration (crown or bridge). Golden warm hue for better aesthetics.

◆ Screw Ref. Number: 06.330.100 / 06.100

## Multi-Unit Abutments.

Ref. Number

Diameter ∅

Angulation Degrees(°)

Gingiva Height (mm)



MU.06.330.00.100	3.3	0°	1.0
MU.06.330.00.200	3.3	0°	2.0
MU.06.330.00.300	3.3	0°	3.0
MU.06.330.00.400	3.3	0°	4.0
MU.06.375.00.100	3.75	0°	1.0
MU.06.375.00.200	3.75	0°	2.0
MU.06.375.00.300	3.75	0°	3.0
MU.06.375.00.400	3.75	0°	4.0
MU.06.375.17.250	3.75	17°	2.5
MU.06.375.17.350	3.75	17°	3.5
MU.06.375.30.350	3.75	30°	3.5
MU.06.375.30.450	3.75	30°	4.5
MU.06.450.00.100	4.5	0°	1.0
MU.06.450.00.200	4.5	0°	2.0
MU.06.450.00.300	4.5	0°	3.0
MU.06.450.00.400	4.5	0°	4.0

\* Multi-unit abutments is currently the most accepted and highly recommended solution in screw retained restorations. They have many advantages such as a common prosthetic platform for all implants.

◆ Screw Ref. Number: MU06.100A

# Purple Line.6

Titanium grade 5

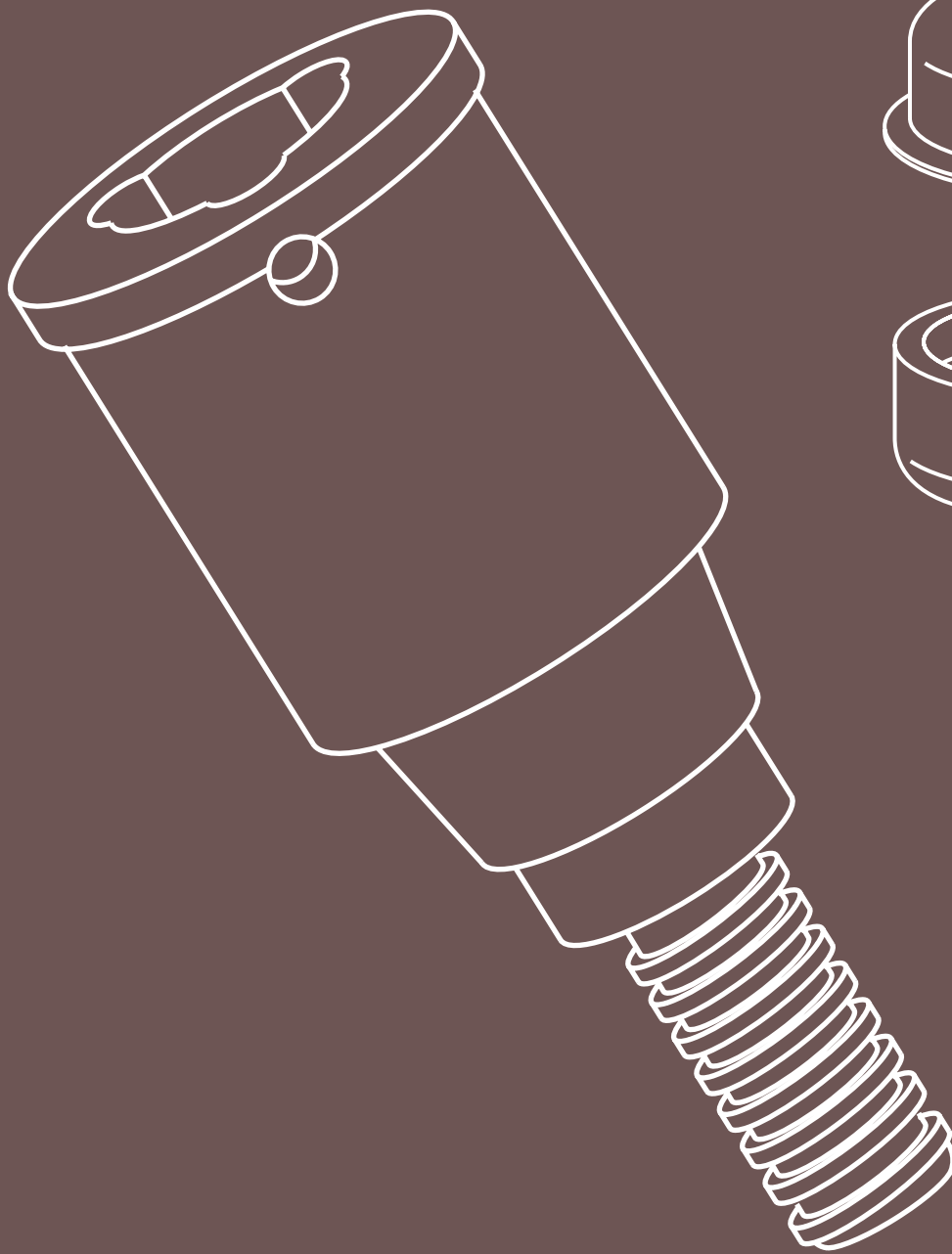
Prosthetic components compatible with  
MIS SEVEN® implants

Multi-Unit Prosthetic System.	Description	Reference Number
	Healing Screw	MU.402
	Impression Post Open Tray	MU.500
	Scan Abutment	MU.SA
	Lab Analog	MU.200
	Plastic Castable	MU.301
	Ti-Base	MU.601
	Titanium Temporary Cylinder	MU.901
	<p>◆ <b>Screw Ref. Number:</b> MU.500.100 MU.100</p>	

\* Multi-Unit has its own prosthetic components, the same for all implant systems.



Titanium Grade 5



# Brown Line.8

Prosthetic components compatible with  
**NOBEL ACTIVE® implants**

# Brown Line.8

Titanium grade 5

Prosthetic components compatible with  
NOBEL ACTIVE® implants

## Healing Screws.



Ref. Number	Diameter $\varnothing$	Height (mm)
08.350.403	3.5	3
08.350.405	3.5	5
08.430/500.403	4.3/5.0	3
08.430/500.405	4.3/5.0	5

## Lab Analogs.



Ref. Number	Diameter $\varnothing$
08.350.200	3.5
08.430/500.200	4.3/5.0

\* Only one lab analog for both methods  
(impression or scanning)

## Impression Posts.



Ref. Number	Diameter $\varnothing$	Impression Method
08.350.500	3.5	Open Tray
08.350.550	3.5	Closed Tray
08.430/500.500	4.3/5.0	Open Tray
08.430/500.550	4.3/5.0	Closed Tray

◆ **Screw Ref. Number:**  
Open Tray: 08.350.500.100 / 08.430/500.500.100  
Closed Tray 08.350.100 / 08.430/500.100

## Scan Bodies.



Ref. Number	Diameter $\varnothing$
08.350.SA	3.5
08.430/500.SA	4.3/5.0

◆ **Screw Ref. Number:** 08.350.100 / 08.430/500.100

\* Novamind scan bodies are used only in combination to novamind free libraries either with novamind ti-bases or directly on implant restorative platforms. Scan Bodies are made of peek and are easily scanned with intra-oral and desktop scanners.

Prosthetic components compatible with  
**NOBEL ACTIVE® implants**

## Ti-Bases.



\* Novamind **TI-BASES** are colored with a warm Golden Hue for better aesthetic effect. They are available in two types, with and without antirotation depending on the type of restoration (crown or bridge)

	Ref. Number	Diameter $\varnothing$	Gingiva Height (mm)	
⊕	08.350.600.10	3,5	1	⊕ Anti-Rotation
⊕	08.350.600.20	3,5	2	
⊗	08.350.601.10	3,5	1	⊗ No Anti-rotation
⊗	08.350.601.20	3,5	2	
⊕	08.430/500.600.10	4,3/5,0	1	⊕ Anti-Rotation
⊕	08.430/500.600.20	4,3/5,0	2	
⊗	08.430/500.601.10	4,3/5,0	1	⊗ No Anti-rotation
⊗	08.430/500.601.20	4,3/5,0	2	

◆ **Screw Ref. Number:** 08.350.100 / 08.430/500.100

## Titanium Abutments for Cemented Restorations.



	Ref. Number	Diameter $\varnothing$	Angulation Degrees(°)	Gingiva Height (mm)
	08.350.00.150	3,5	0°	1,5
	08.350.00.300	3,5	0°	3
	08.350.17.150	3,5	17°	1,5
	08.350.17.300	3,5	17°	3
	08.430/500.00.150	4,3/5,0	0°	1,5
	08.430/500.00.300	4,3/5,0	0°	3
	08.430/500.17.150	4,3/5,0	17°	1,5
	08.430/500.17.300	4,3/5,0	17°	3

◆ **Screw Ref. Number:** 08.350.100 / 08.430/500.100

\* Available in different degrees of angulation 0°, 17°, and in some cases 23°. Two different gingiva height collars to optimize the best possible emergence profile.

## Castable Abutments.



	Ref. Number	Diameter $\varnothing$	
⊕	08.350.710	3,5	⊕ Anti-Rotation
⊕	08.350.711	3,5	
⊗	08.430/500.710	4,3/5,0	⊗ No Anti-rotation
⊗	08.430/500.711	4,3/5,0	

◆ **Screw Ref. Number:** 08.350.100 / 08.430/500.100

\* Two types of castable abutments are available. One is fully plastic and one is with pre-fabricated Co-Cr implant connection for cast-on.

# Brown Line.8

Titanium grade 5

Prosthetic components compatible with  
**NOBEL ACTIVE®** implants

## Overdenture Over-Lock Abutments.

Ref. Number    Diameter  $\varnothing$     Height (mm)



08.350.801		3.5	1
08.350.802		3.5	2
08.350.803		3.5	3
08.350.804		3.5	4
08.430/500.801		4.3/5.0	1
08.430/500.802		4.3/5.0	2
08.430/500.803		4.3/5.0	3
08.430/500.804		4.3/5.0	4

\* Over-Locks are compatible to locator abutments for overdentures. 4 different Heights.

## Overlock Standard Retention Kit.

Description

Reference Number



Metal Housing	MH800
Black Lab Plastic	PL.800.BLACK
Blue Plastic Light Retention 0.68 KG	PL.800.BLUE
Grey Plastic Medium Retention 1.36 KG	PL.800.GREY
Clear Plastic Strong Retention 2.26 KG	PL.800.CLEAR

\* Available either as a set or individually. They are used in cases where the total angulation axis among implants does not exceed 15°.

## Overlock Extended Retention Kit with no Core.

Description

Reference Number



Metal Housing	MH800
Black Lab Plastic	PL.800.BLACK
Red Plastic Light Retention 0.68 KG	PL.800.RED
Orange Plastic Medium Retention 1.36 KG	PL.800.ORANGE
Green Plastic Strong Retention 2.26 KG	PL.800.GREEN

\* Available either as a set or individually. They are used in cases where the total angulation axis among implants exceeds 15°.

## Titanium Temporary Cylinders.

Ref. Number

Diameter  $\varnothing$



08.350.900		3.5	
08.350.901		3.5	
08.430/500.900		4.3/5.0	
08.430/500.901		4.3/5.0	



Anti-Rotation

No Anti-rotation

◆ Screw Ref. Number: 08.350:100 / 08.430/500:100

\* Chairside use or indirect in lab. With and without antirotation depending on the type of restoration (crown or bridge). Golden warm hue for better aesthetics.



Prosthetic components compatible with  
**NOBEL ACTIVE® implants**

## Multi-Unit Abutments.



Ref. Number	Diameter $\varnothing$	Angulation Degrees(°)	Gingiva Height (mm)
MU.08.350.00.100	3,5	0 °	1.0
MU.08.350.00.200	3,5	0 °	2.0
MU.08.350.00.300	3,5	0 °	3.0
MU.08.350.00.400	3,5	0 °	4.0
MU.08.350.17.250	3,5	17 °	2.5
MU.08.350.17.350	3,5	17 °	3.5
MU.08.350.30.350	3,5	30 °	3.5
MU.08.350.30.450	3,5	30 °	4.5
MU.08.430/500.00.100	4.3/5.0	0 °	1
MU.08.430/500.00.200	4.3/5.0	0 °	2
MU.08.430/500.00.300	4.3/5.0	0 °	3
MU.08.430/500.00.400	4.3/5.0	0 °	4
MU.08.430/500.17.250	4.3/5.0	17 °	2.5
MU.08.430/500.17.350	4.3/5.0	17 °	3.5
MU.08.430/500.30.350	4.3/5.0	30 °	3.5
MU.08.430/500.30.450	4.3/5.0	30 °	4.5

\* Multi-unit abutments is currently the most accepted and highly recommended solution in screw retained restorations. They have many advantages such as a common prosthetic platform for all implants.

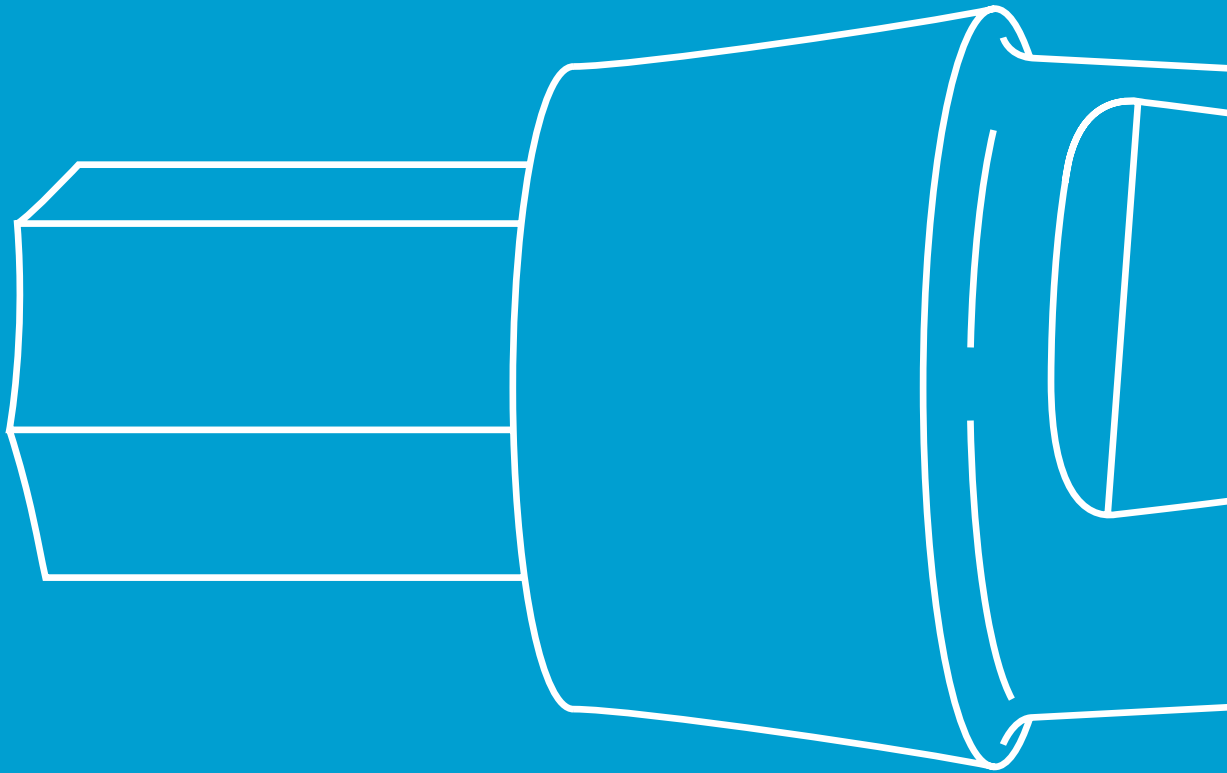
## Multi-Unit Prosthetic System.



Description	Reference Number
Healing Screw	MU.402
Impression Post Open Tray	MU.500
Scan Abutment	MU.SA
Lab Analog	MU.200
Plastic Castable	MU.301
Ti-Base	MU.601
Titanium Temporary Cylinder	MU.901

◆ Screw Ref. Number: MU.500:100  
MU.100

\* Multi-Unit has its own prosthetic components, the same for all implant systems.



# Cyan Line.10

Prosthetic components compatible with  
**Bredent Blue Sky® implants**

10.100

10.



# Cyan Line.10

Titanium grade 5

Prosthetic components compatible with  
Bredent Blue Sky® implants

## Healing Screws.



Ref. Number	Diameter $\varnothing$	Height (mm)
10.400.403	4	3
10.400.405	4	5

## Lab Analogs.



Ref. Number	Diameter $\varnothing$
10.400.200	4

\* Only one lab analog for both methods (impression or scanning)

## Impression Posts.



Ref. Number	Diameter $\varnothing$	Impression Method
10.400.500	4	Open Tray
10.400.550	4	Closed Tray

◆ **Screw Ref. Number:** Open Tray: 10.500.100  
Closed Tray: 10.100

## Scan Bodies.



Ref. Number	Diameter $\varnothing$
10.400.SA	4

\* Novamind scan bodies are used only in combination to novamind free libraries either with novamind ti-bases or directly on implant restorative platforms. Scan Bodies are made of peek and are easily scanned with intra-oral and desktop scanners.

◆ **Screw Ref. Number:** 10.100

Prosthetic components compatible with  
**Bredent Blue Sky® implants**

## Ti-Bases.



Ref. Number	Diameter $\varnothing$	Gingiva Height (mm)
10.400.600.05	4	0.5
10.400.600.15	4	1.5
10.400.601.05	4	0.5
10.400.601.15	4	1.5

◆ **Screw Ref. Number:** 10:100

⊕ **R** Anti-Rotation

⊖ **R** No Anti-rotation

\* Novamind TI-BASES are colored with a warm Golden Hue for better aesthetic effect. They are available in two types, with and without antirotation depending on the type of restoration (crown or bridge)

## Titanium Abutments for cemented restorations.



Ref. Number	Diameter $\varnothing$	Angulation Degrees(°)	Gingiva Height (mm)
10.400.00.150	4	0°	1.5
10.400.00.250	4	0°	2.5
10.400.00.350	4	0°	3.5
10.400.17.150	4	17°	1.5
10.400.17.250	4	17°	2.5
10.400.17.350	4	17°	3.5

◆ **Screw Ref. Number:** 10:100

\* Available in different degrees of angulation 0°, 17°, and in some cases 23°. Three different gingiva height collars to optimize the best possible emergence profile.

## Castable Abutments.



Ref. Number	Diameter $\varnothing$
10.400.300	4
10.400.301	4
10.400.710	4
10.400.711	4

⊕ **R** Anti-Rotation

⊖ **R** No Anti-rotation

◆ **Screw Ref. Number:** 10:100

\* Two types of castable abutments are available. One is fully plastic and one is with pre-fabricated Co-Cr implant connection for cast-on.

Prosthetic components compatible with  
Bredent Blue Sky® implants

## Overdenture Over-Lock Abutments.

Ref. Number    Diameter  $\varnothing$     Height (mm)



10.400.801	4	1
10.400.802	4	2
10.400.803	4	3
10.400.804	4	4

\* Over-Locks are compatible to locator abutments for overdentures. 4 different Heights.

## Overlock Standard Retention Kit.

Description

Reference Number



\* Available either as a set or individually. They are used in cases where the total angulation axis among implants does not exceed 15°.

Metal Housing	MH800
Black Lab Plastic	PL.800.BLACK
Blue Plastic Light Retention 0.68 KG	PL.800.BLUE
Grey Plastic Medium Retention 1.36 KG	PL.800.GREY
Clear Plastic Strong Retention 2.26 KG	PL.800.CLEAR

## Overlock Extended Retention Kit with no Core.

Description

Reference Number



\* Available either as a set or individually. They are used in cases where the total angulation axis among implants exceeds 15°.

Metal Housing	MH800
Black Lab Plastic	PL.800.BLACK
Red Plastic Light Retention 0.68 KG	PL.800.RED
Orange Plastic Medium Retention 1.36 KG	PL.800.ORANGE
Green Plastic Strong Retention 2.26 KG	PL.800.GREEN

Prosthetic components compatible with  
**Bredent Blue Sky® implants**

## Multi-Unit Abutments.



Ref. Number	Diameter $\varnothing$	Angulation Degrees(°)	Gingiva Height (mm)
-------------	------------------------	-----------------------	---------------------

MU.10.400.00.100	4	0°	1.0
MU.10.400.00.200	4	0°	2.0
MU.10.400.00.300	4	0°	3.0
MU.10.400.00.400	4	0°	4.0

\* Multi-unit abutments is currently the most accepted and highly recommended solution in screw retained restorations. They have many advantages such as a common prosthetic platform for all implants.

## Multi-Unit Prosthetic System.

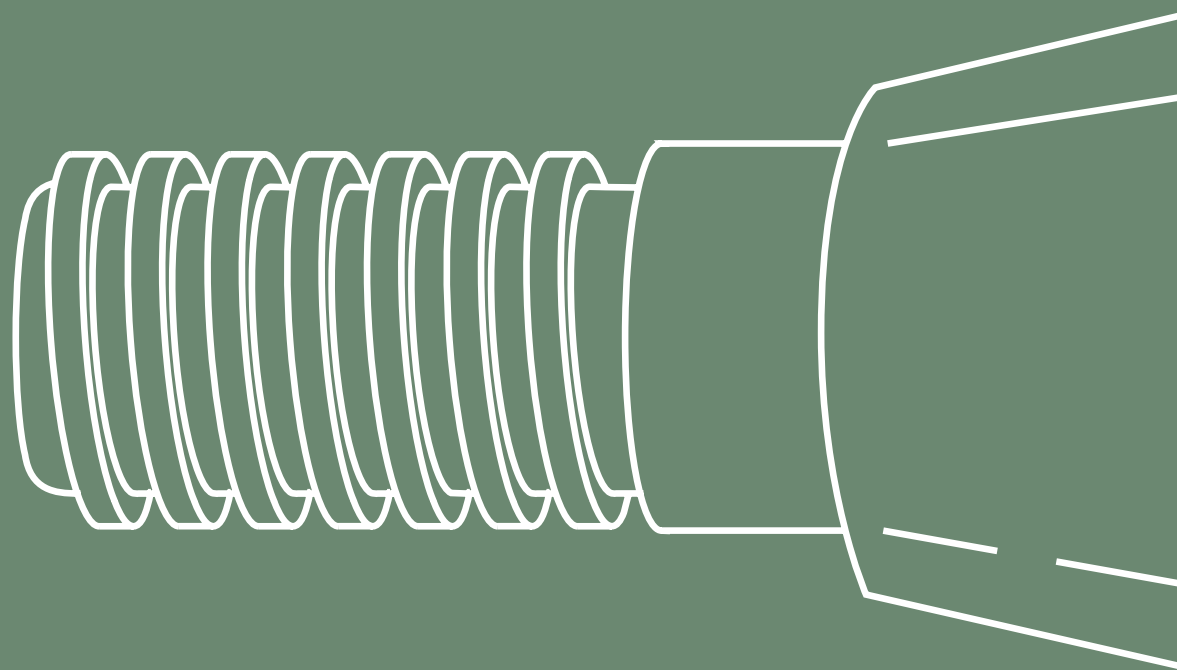


Description	Reference Number
-------------	------------------

Healing Screw	MU.402
Impression Post Open Tray	MU.500
Scan Abutment	MU.SA
Lab Analog	MU.200
Plastic Castable	MU.301
Ti-Base	MU.601
Titanium Temporary Cylinder	MU.901

◆ **Screw Ref. Number:** MU.500.100  
MU.100

\* Multi-Unit has its own prosthetic components, the same for all implant systems.

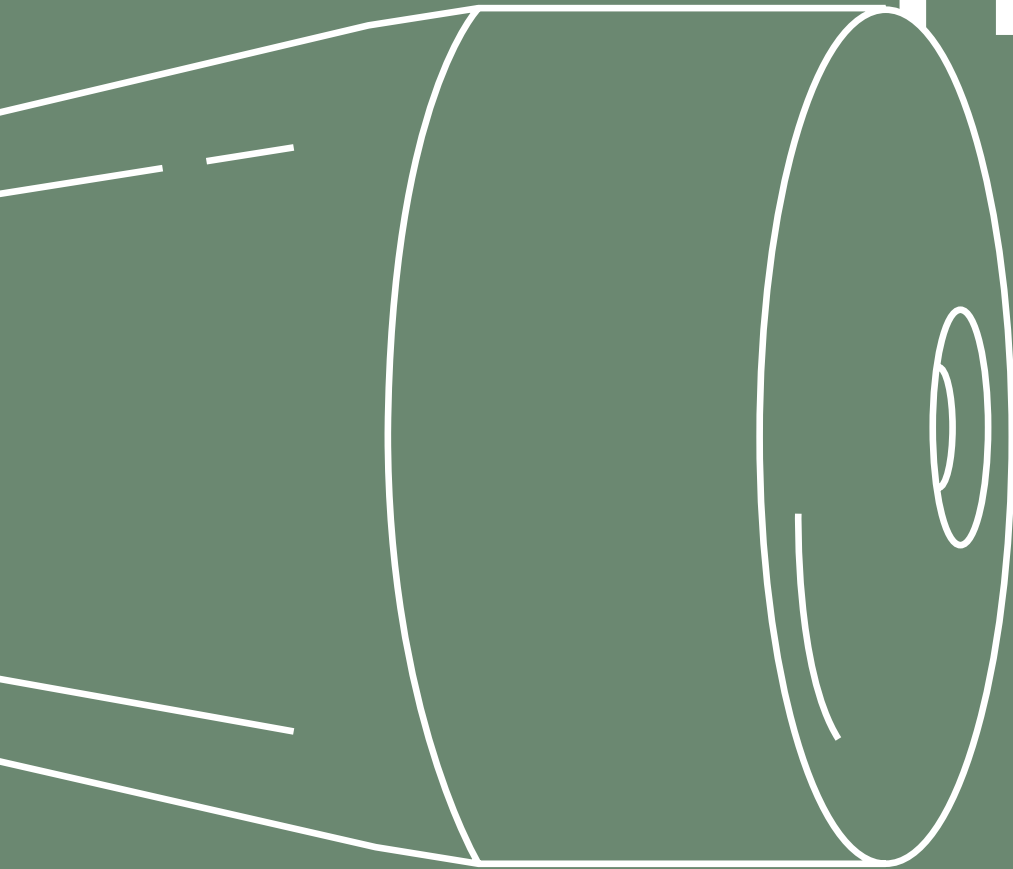


# Olive Line.11

Prosthetic components compatible with  
**Implantium-Dentium® implants**



11.



# Olive Line.11

Titanium grade 5

Prosthetic components compatible with  
Implantium-Dentium® implants

## Healing Screws.



Ref. Number	Diameter $\varnothing$	Height (mm)
11.450.401	4.5	1
11.450.402	4.5	2
11.450.403	4.5	3
11.450.405	4.5	5

## Lab Analogs.



Ref. Number	Diameter $\varnothing$
11.450.200	4.5

\* Only one lab analog for both methods  
(impression or scanning)

## Impression Posts.



Ref. Number	Diameter $\varnothing$	Impression Method
11.450.500	4.5	Open Tray
11.450.550	4.5	Closed Tray

◆ **Screw Ref. Number:** Open Tray: 11.500.100  
Closed Tray: 11.100

## Scan Bodies.



Ref. Number	Diameter $\varnothing$
11.450.SA	4.5

◆ **Screw Ref. Number:** 11.100

\* Novamind scan bodies are used only in combination to novamind free libraries either with novamind ti-bases or directly on implant restorative platforms. Scan Bodies are made of peek and are easily scanned with intra-oral and desktop scanners.

Prosthetic components compatible with Implantium-Dentium® implants

## Ti-Bases.

Ref. Number    Diameter  $\varnothing$     Gingiva Height (mm)



	11.450.600.10	4,5	1,0
	11.450.600.20	4,5	2,0
	11.450.601.10	4,5	1,0
	11.450.601.20	4,5	2,0

Anti-Rotation  
 No Anti-rotation

Screw Ref. Number: 11:100

Novamind TI-BASES are colored with a warm Golden Hue for better aesthetic effect. They are available in two types, with and without antirotation depending on the type of restoration (crown or bridge)

## Titanium Abutments for cemented restorations.

Ref. Number    Diameter  $\varnothing$     Angulation Degrees(°)    Gingiva Height (mm)



11.450.00.150	4,5	0 °	1,5
11.450.00.250	4,5	0 °	2,5
11.450.00.350	4,5	0 °	3,5
11.450.17.150	4,5	17 °	1,5
11.450.17.250	4,5	17 °	2,5
11.450.17.350	4,5	17 °	3,5
11.450.25.200	4,5	25 °	2,0
11.450.25.300	4,5	25 °	3,0
11.450.25.400	4,5	25 °	4,0

Screw Ref. Number: 11:100

Available in three different degrees of angulation 0,17,25. Three different gingiva height collars to optimize the best possible emergence profile.

## Castable Abutments.

Ref. Number    Diameter  $\varnothing$



	11.450.710	4,5
	11.450.711	4,5

Anti-Rotation  
 No Anti-rotation

Screw Ref. Number: 11:100

Two types of castable abutments are available. One is fully plastic and one is with pre-fabricated Co-Cr implant connection for cast-on.

Prosthetic components compatible with Implantium-Dentium® implants

## Overdenture Over-Lock Abutments.

Ref. Number    Diameter  $\varnothing$     Height (mm)



11.450.801	4.5	1
11.450.802	4.5	2
11.450.803	4.5	3
11.450.804	4.5	4

\* Over-Locks are compatible to locator abutments for overdentures. 4 different Heights.

## Overlock Standard Retention Kit.

Description

Reference Number



\* Available either as a set or individually. They are used in cases where the total angulation axis among implants does not exceed 15°.

Metal Housing	MH800
Black Lab Plastic	PL.800.BLACK
Blue Plastic Light Retention 0.68 KG	PL.800.BLUE
Grey Plastic Medium Retention 1.36 KG	PL.800.GREY
Clear Plastic Strong Retention 2.26 KG	PL.800.CLEAR

## Overlock Extended Retention Kit with no Core.

Description

Reference Number



\* Available either as a set or individually. They are used in cases where the total angulation axis among implants exceeds 15°.

Metal Housing	MH800
Black Lab Plastic	PL.800.BLACK
Red Plastic Light Retention 0.68 KG	PL.800.RED
Orange Plastic Medium Retention 1.36 KG	PL.800.ORANGE
Green Plastic Strong Retention 2.26 KG	PL.800.GREEN

Prosthetic components compatible with  
Implantium-Dentium® implants

## Multi-Unit Abutments.



Ref. Number

Diameter  $\varnothing$ Angulation  
Degrees(°)Gingiva  
Height (mm)

MU.11.450.00.100	4.5	0 °	1.0
MU.11.450.00.200	4.5	0 °	2.0
MU.11.450.00.300	4.5	0 °	3.0
MU.11.450.00.400	4.5	0 °	4.0
MU.11.450.17.250	4.5	17 °	2.5

\* Multi-unit abutments is currently the most accepted and highly recommended solution in screw retained restorations. They have many advantages such as a common prosthetic platform for all implants.

## Multi-Unit Prosthetic System.

Description

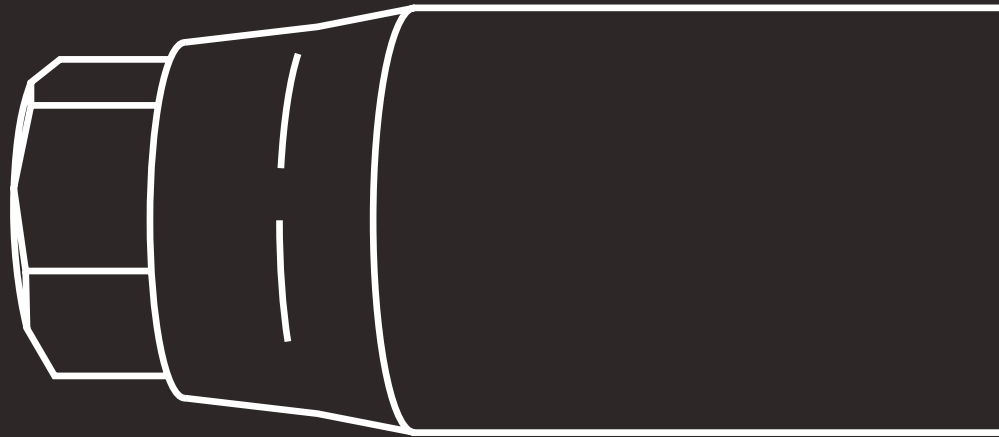
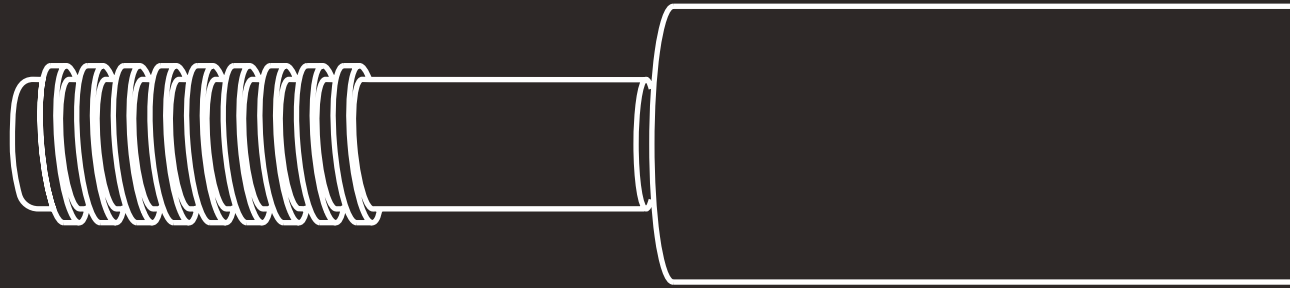
Reference Number



Healing Screw	MU.402
Impression Post Open Tray	MU.500
Scan Abutment	MU.SA
Lab Analog	MU.200
Plastic Castable	MU.301
Ti-Base	MU.601
Titanium Temporary Cylinder	MU.901

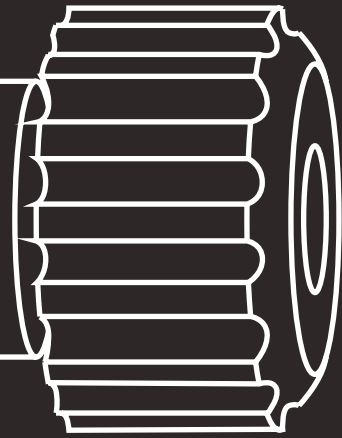
◆ Screw Ref. Number: MU.500.100  
MU.100

\* Multi-Unit has its own prosthetic components, the same for all implant systems.

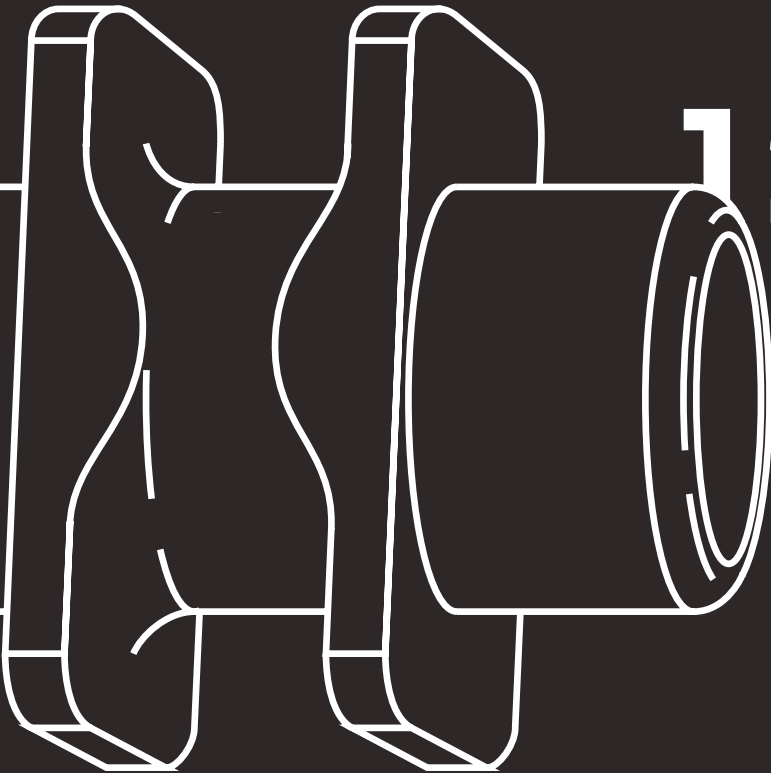


# Black Line.12

Prosthetic components compatible with  
**Megagen anyridge series® implants**



**12.**



# Black Line.12

Titanium grade 5

Prosthetic components compatible with  
Megagen anyridge series® implants

## Healing Screws.

Ref. Number Diameter  $\varnothing$  Height (mm)

12.500.403

5

3

12.500.405

5

5



## Lab Analogs.

Ref. Number Diameter  $\varnothing$

12.500.200

5

\* Only one lab analog for both methods  
(impression or scanning)



## Impression Posts.

Ref. Number Diameter  $\varnothing$  Impression Method

12.500.500

5

Open Tray

12.500.550

5

Closed Tray

◆ Screw Ref. Number: Open Tray: 12.500.100  
Cloed Tray: 12.100



## Scan Bodies.

Ref. Number Diameter  $\varnothing$

12.500.SA

5

◆ Screw Ref. Number: 12.100

\* Novamind scan bodies are used only in combination to novamind free libraries either with novamind ti-bases or directly on implant restorative platforms. Scan Bodies are made of peek and are easily scanned with intra-oral and desktop scanners.









# Black Line.12

Prosthetic components compatible with  
Megagen anyridge series® implants

## Ti-Bases.



Ref. Number Diameter  $\varnothing$  Gingiva Height (mm)

 12.500.600.10	5	1.0
 12.500.600.20	5	2.0
 12.500.601.10	5	1.0
 12.500.601.20	5	2.0

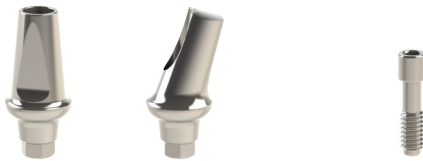
 Anti-Rotation

 No Anti-rotation

 Screw Ref. Number: 12.100

\* Novamind TI-BASES are colored with a warm Golden Hue for better aesthetic effect. They are available in two types, with and without antirotation depending on the type of restoration (crown or bridge)

## Titanium Abutments for cemented restorations.



Ref. Number Diameter  $\varnothing$  Angulation Degrees(°) Gingiva Height (mm)

12.500.00.200	5	0 °	2
12.500.17.200	5	17 °	2





 Screw Ref. Number: 12.100

\* Available in different degrees of angulation 0°, 17°, and in some cases 23°. Three different gingiva height collars to optimize the best possible emergence profile.

## Castable Abutments.



Ref. Number Diameter  $\varnothing$

 12.500.300	5
 12.500.301	5
 12.500.710	5
 12.500.711	5

 Anti-Rotation

 No Anti-rotation

 Screw Ref. Number: 12.100

\* Two types of castable abutments are available. One is fully plastic and one is with pre-fabricated Co-Cr implant connection for cast-on.

# Black Line.12

Titanium grade 5

Prosthetic components compatible with  
Megagen anyridge series® implants

## Overdenture Over-Lock Abutments.

Ref. Number    Diameter  $\varnothing$     Height (mm)



12.500.801	5	1
12.500.802	5	2
12.500.803	5	3
12.500.804	5	4

\* Over-Locks are compatible to locator abutments for overdentures. 4 different Heights.

## Overlock Standard Retention Kit.

Description

Reference Number



Metal Housing	MH800
Black Lab Plastic	PL.800.BLACK
Blue Plastic Light Retention 0.68 KG	PL.800.BLUE
Grey Plastic Medium Retention 1.36 KG	PL.800.GREY
Clear Plastic Strong Retention 2.26 KG	PL.800.CLEAR

\* Available either as a set or individually. They are used in cases where the total angulation axis among implants does not exceed 15°.

## Overlock Extended Retention Kit with no Core.

Description

Reference Number



Metal Housing	MH800
Black Lab Plastic	PL.800.BLACK
Red Plastic Light Retention 0.68 KG	PL.800.RED
Orange Plastic Medium Retention 1.36 KG	PL.800.ORANGE
Green Plastic Strong Retention 2.26 KG	PL.800.GREEN

\* Available either as a set or individually. They are used in cases where the total angulation axis among implants exceeds 15°.

Prosthetic components compatible with  
Megagen anyridge series® implants

## Multi-Unit Abutments.



Ref. Number	Diameter $\varnothing$	Angulation Degrees(°)	Gingiva Height (mm)
-------------	------------------------	-----------------------	---------------------

MU.12.500.00.150	5	0 °	1.5
MU.12.500.00.250	5	0 °	2.5
MU.12.500.00.350	5	0 °	3.5
MU.12.500.00.450	5	0 °	4.5

\* Multi-unit abutments is currently the most accepted and highly recommended solution in screw retained restorations. They have many advantages such as a common prosthetic platform for all implants.

## Multi-Unit Prosthetic System.

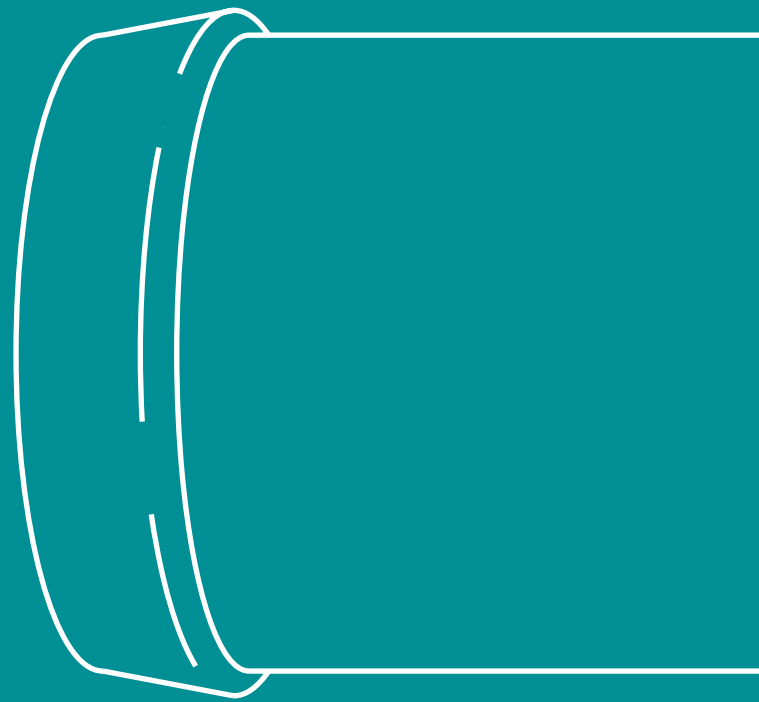
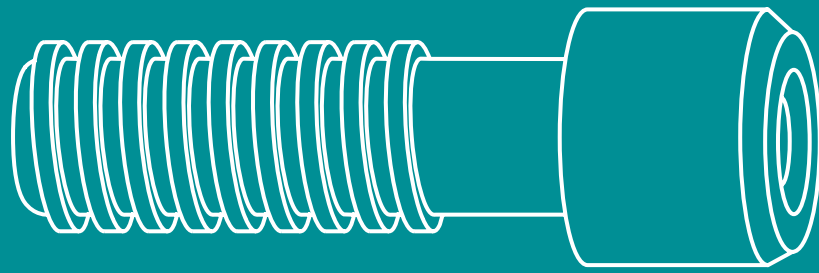


Description	Reference Number
-------------	------------------

Healing Screw	MU.402
Impression Post Open Tray	MU.500
Scan Abutment	MU.SA
Lab Analog	MU.200
Plastic Castable	MU.301
Ti-Base	MU.601
Titanium Temporary Cylinder	MU.901

◆ **Screw Ref. Number:** MU.500.100  
MU.100

\* Multi-Unit has its own prosthetic components, the same for all implant systems.



# Petrol Line.33

Prosthetic components compatible with  
**Brannemark/3I External Hex Standard platform**

33.100

33.



Prosthetic components compatible with  
Brannemark/3i External Hex Standard Platform

## Lab Analogs.

Ref. Number    Diameter  $\varnothing$

33.410.200    4.1

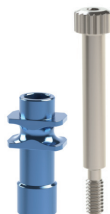


\* Only one lab analog for both methods (impression or scanning)

## Impression Posts.

Ref. Number    Diameter  $\varnothing$     Impression Method

33.410.500    4.1    Open Tray



◆ Screw Ref. Number: Open Tray: 33.500.100

## Scan Bodies.

Ref. Number    Diameter  $\varnothing$

33.410.SA    4.1



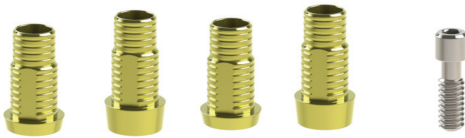
◆ Screw Ref. Number: 33.100

\* Novamind scan bodies are used only in combination to novamind free libraries either with novamind ti-bases or directly on implant restorative platforms. Scan Bodies are made of peek and are easily scanned with intra-oral and desktop scanners.

Prosthetic components compatible with  
Brannemark/3i External Hex Standard Platform

## Ti-Bases.

Ref. Number Diameter  $\varnothing$  Gingiva Height (mm)



	33.410.600.10	4.1	1.0		Anti-Rotation
	33.410.600.20	4.1	2.0		Anti-Rotation
	33.410.601.10	4.1	1.0		No Anti-rotation
	33.410.601.20	4.1	2.0		No Anti-rotation

Screw Ref. Number: 33.100

\* Novamind TI-BASES are colored with a warm Golden Hue for better aesthetic effect. They are available in two types, with and without antirotation depending on the type of restoration (crown or bridge)

## Castable Abutments.

Ref. Number Diameter  $\varnothing$



	33.410.300	4.1		Anti-Rotation
	33.410.301	4.1		Anti-Rotation
	33.410.710	4.1		No Anti-rotation
	33.410.711	4.1		No Anti-rotation

Screw Ref. Number: 33.100

\* Pre-fabricated Co-Cr implant connection for cast-on.

## Titanium Temporary Cylinders

Ref. Number Diameter  $\varnothing$



	33.410.900	4.1		Anti-Rotation
	33.410.901	4.1		No Anti-rotation

Screw Ref. Number: 33.100

\* Chairside use or indirect in lab. With and without antirotation depending on the type of restoration (crown or bridge). Golden warm hue for better aesthetics.









[www.novamind.gr](http://www.novamind.gr)



4, Apostolou Pavlou str. & 61, Molas Ave.  
13672 Acharnes, Athens – Greece

+30 210 3470411 – +30 210 3470661 (production)

[info@novamind.gr](mailto:info@novamind.gr)