



Titanium Grade 5



Orange Line.2

Prosthetic components compatible with
**STRAUMANN SOFT TISSUE LEVEL RN
SYSTEM® implants**

Orange Line.2

Titanium grade 5

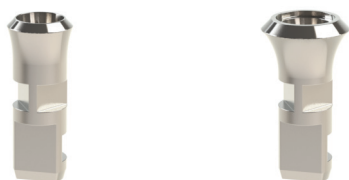
Prosthetic components compatible with
STRAUMANN SOFT TISSUE LEVEL® RN SYSTEM implants

Healing Screws.



Ref. Number	Diameter \varnothing	Height (mm)
02.480.402	4.8	2
02.480.403	4.8	3
02.480.404	4.8	4
02.480.405	4.8	5
02.650.402	6.5	2
02.650.403	6.5	3
02.650.404	6.5	4

Lab Analogs.



Ref. Number	Diameter \varnothing
02.480.200	4.8
02.650.200	6.5

* Only one lab analog for both methods (impression or scanning)

Impression Posts.



Ref. Number	Diameter \varnothing	Impression Method
02.480.500	4.8	Open Tray
02.480.550	4.8	Closed Tray
02.650.500	6.5	Open Tray
02.650.550	6.5	Closed Tray

◆ **Screw Ref. Number:** Open Tray: 02.500.100
Closed Tray: 02.100

Scan Bodies.



Ref. Number	Diameter \varnothing
02.480.SA	4.8
02.650.SA	6.5

◆ **Screw Ref. Number:** 02.100CAD/CAM

* Novamind scan bodies are used only in combination to novamind free libraries either with novamind ti-bases or directly on implant restorative platforms. Scan Bodies are made of peek and are easily scanned with intra-oral and desktop scanners.

Prosthetic components compatible with
STRAUMANN SOFT TISSUE LEVEL® RN SYSTEM implants

Ti-Bases.



	Ref. Number	Diameter \varnothing	Gingiva Height (mm)
	02.480.600.05	4,8	0,5
	02.480.600.15	4,8	1,5
	02.480.601.05	4,8	0,5
	02.480.601.15	4,8	1,5
	02.650.600.05	6,5	0,5
	02.650.600.15	6,5	1,5
	02.650.601.05	6,5	0,5
	02.650.601.15	6,5	1,5

* Novamind TI-BASES are colored with a warm Golden Hue for better aesthetic effect. They are available in two types, with and without antirotation depending on the type of restoration (crown or bridge)

◆ Screw Ref. Number: 02.100.IN

Anti-Rotation

No Anti-rotation

Titanium Abutments for cemented restorations.



	Ref. Number	Diameter \varnothing	Angulation Degrees(°)
	02.480.00	4,8	0°
	02.480.17A*	4,8	17°
	02.480.17B**	4,8	17°
	02.480.23A*	4,8	23°
	02.480.23B**	4,8	23°
	02.650.00	6,5	0°
	02.650.17A*	6,5	17°
	02.650.17B**	6,5	17°

* Available in different degrees of angulation 0°,17°,23°. Two different angulation options.

◆ Screw Ref. Number: 02.100

* Angulation towards the side of the octagon

** Angulation towards the corner of the octagon

Orange Line.2

Titanium grade 5

Prosthetic components compatible with
STRAUMANN SOFT TISSUE LEVEL® RN SYSTEM implants

Titanium Solid One Piece Abutments for Cemented Restorations.

Ref. Number Diameter \varnothing Height (mm)











02.480.40	4.8	4
02.480.55	4.8	5.5
02.480.70	4.8	7
02.480.90	4.8	9

* Available in 4 different Heights

Castable Abutments.

Ref. Number Diameter \varnothing



	02.480.300	4.8
	02.480.301	4.8
	02.480.710	4.8
	02.480.711	4.8
	02.650.300	6.5
	02.650.301	6.5
	02.650.710	6.5
	02.650.711	6.5

 Anti-Rotation

 No Anti-rotation

◆ Screw Ref. Number: 02.100.P-PL
02.100.IN

* Two types of castable abutments are available. One is fully plastic and one is with pre-fabricated Co-Cr implant connection for cast-on.

Overdenture Over-Lock Abutments.

Ref. Number Diameter \varnothing Height (mm)



02.480.801	4.8	1
02.480.802	4.8	2
02.480.803	4.8	3
02.480.804	4.8	4
02.480.805	4.8	5

* Over-Locks are compatible to locator abutments for overdentures. 5 different Heights.

Prosthetic components compatible with
STRAUMANN SOFT TISSUE LEVEL® RN SYSTEM implants

Overlock Standard Retention Kit.

Description

Reference Number



* Available either as a set or individually. They are used in cases where the total angulation axis among implants does not exceed 15°.

Metal Housing	MH800
Black Lab Plastic	PL.800.BLACK
Blue Plastic Light Retention 0.68 KG	PL.800.BLUE
Grey Plastic Medium Retention 1.36 KG	PL.800.GREY
Clear Plastic Strong Retention 2.26 KG	PL.800.CLEAR

Overlock Extended Retention Kit with no Core.

Description

Reference Number



* Available either as a set or individually. They are used in cases where the total angulation axis among implants exceeds 15°.

Metal Housing	MH800
Black Lab Plastic	PL.800.BLACK
Red Plastic Light Retention 0.68 KG	PL.800.RED
Orange Plastic Medium Retention 1.36 KG	PL.800.ORANGE
Green Plastic Strong Retention 2.26 KG	PL.800.GREEN

Overdenture Ball Abutments.

Ref. Number

Diameter \varnothing

Height (mm)



02.480.851	4.8	1
02.480.853	4.8	3

* Ball Abutments for overdentures. Available in 2 different heights. Ball Diameter 2.5mm.

Ball Abutment Retention Kit.

Description

Reference Number



* Available either as a set or individually.

Metal Housing	MH850
Pink Plastic Light Retention	PL.850.PINK
Clear Plastic Strong Retention	PL.850.CLEAR

Orange Line.2

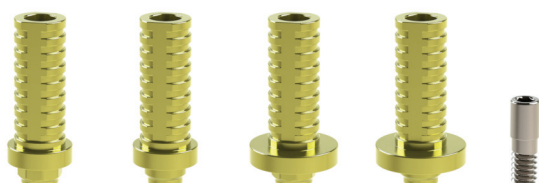
Titanium grade 5

Prosthetic components compatible with
STRAUMANN SOFT TISSUE LEVEL® RN SYSTEM implants

Titanium Temporary Cylinders.

Ref. Number

Diameter \varnothing



02.480.900

4.8

02.480.901

4.8

02.650.900

6.5

02.650.901

6.5

◆ Screw Ref. Number: 02100



Anti-Rotation

No Anti-rotation

* Chairside use or indirect in lab. With and without antirotation depending on the type of restoration (crown or bridge). Golden warm hue for better aesthetics.

Synocta Type Screw Retained Abutment System.

Ref. Number

Diameter \varnothing

Height (mm)



MU.02.480.00

4.8

1.5

Plastic Castables for Synocta Type Screw Retained Abutment.

Ref. Number

Diameter \varnothing



MU.02.480.300

4.8

MU.02.480.301

4.8

◆ Screw Ref. Number: MU.02.480.100