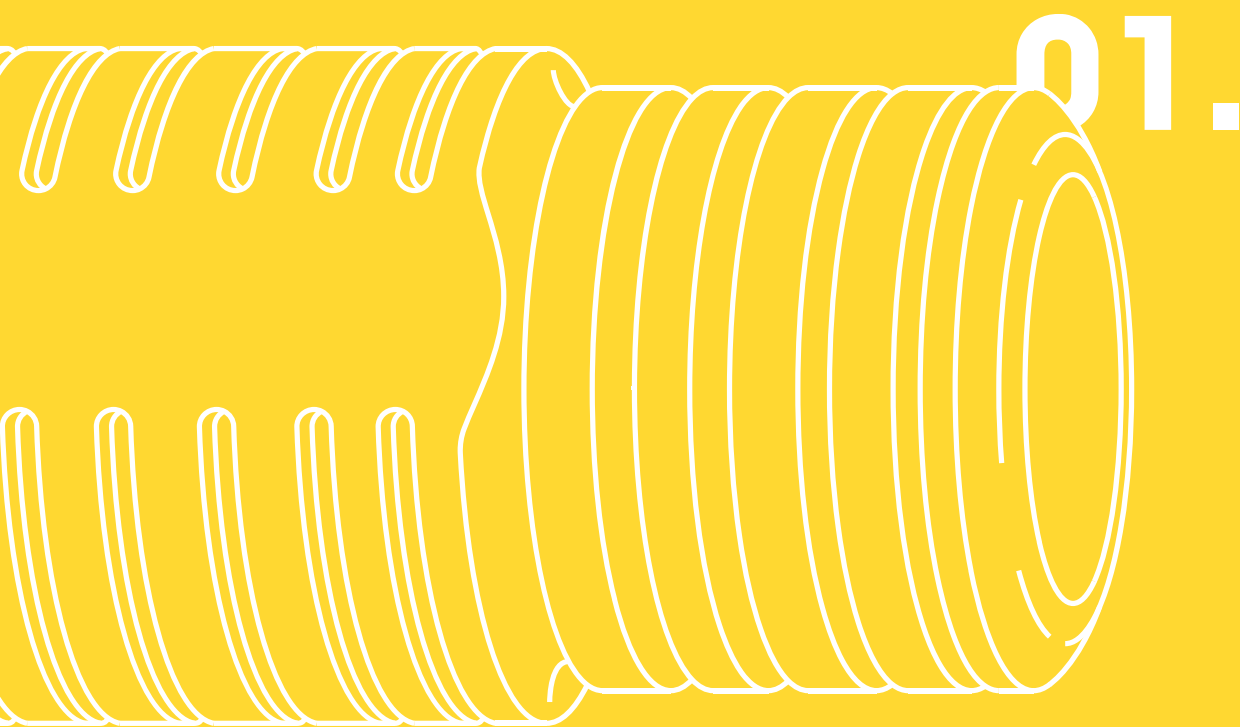


# Yellow Line.1

Prosthetic components compatible with  
**XIVE FRIALIT® DENTSPLY implants**

01.100



# Yellow Line.1

Titanium grade 5

Prosthetic components compatible with  
XIVE FRIALIT® DENTSPLY implants

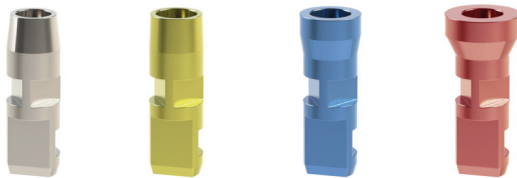
## Healing Screws.



Ref. Number    Diameter  $\varnothing$     Height (mm)

01.340.403	3,4	3
01.340.405	3,4	5
01.380.403	3,8	3
01.380.405	3,8	5
01.450.403	4,5	3
01.450.405	4,5	5
01.550.403	5,5	3
01.550.405	5,5	5

## Lab Analogs.

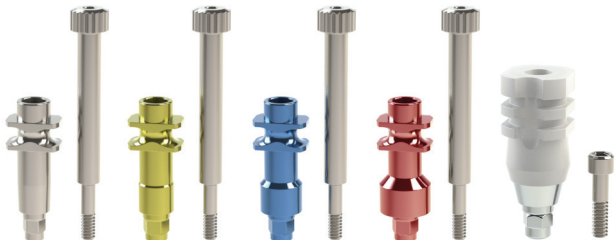


Ref. Number    Diameter  $\varnothing$

01.340.200	3,4
01.380.200	3,8
01.450.200	4,5
01.550.200	5,5

\* Novamind Lab Analogs can be used either on PLASTER MODEL or on 3D PRINTED MODEL (Digital Analog)

## Impression Posts.



Ref. Number    Diameter  $\varnothing$     Impression Method

01.340.500	3,4	Open Tray
01.340.550	3,4	Closed Tray
01.380.500	3,8	Open Tray
01.380.550	3,8	Closed Tray
01.450.500	4,5	Open Tray
01.450.550	4,5	Closed Tray
01.550.500	5,5	Open Tray
01.550.550	5,5	Closed Tray

◆ Screw Ref. Number: Open Tray 01.500.100  
Closed tray: 01.100

## Scan Bodies.



Ref. Number    Diameter  $\varnothing$

01.340.SA	3,4
01.380.SA	3,8
01.450.SA	4,5
01.550.SA	5,5

◆ Screw Ref. Number: 01.100

\* Novamind Scan Bodies are used only in combination to Novamind Free Libraries either with Novamind TI-BASES or directly on implant restorative platforms. Scan Bodies are made of peek and are easily scanned with intra-oral and desktop scanners.

# Yellow Line.1

Prosthetic components compatible with  
XIVE FRIALIT® DENTSPLY implants

## Ti-Bases.



\* Novamind TI-BASES are colored with a warm Golden Hue for better aesthetic effect. They are available in two types, with and without antirotation depending on the type of restoration (crown or bridge)

Anti-Rotation

No Anti-rotation

Ref. Number    Diameter  $\varnothing$     Gingiva Height (mm)

01.340.600.05	3,4	0,5
01.340.600.15	3,4	1,5
01.340.601.05	3,4	0,5
01.340.601.15	3,4	1,5
01.380.600.05	3,8	0,5
01.380.600.15	3,8	1,5
01.380.601.05	3,8	0,5
01.380.601.15	3,8	1,5
01.450.600.05	4,5	0,5
01.450.600.15	4,5	1,5
01.450.601.05	4,5	0,5
01.450.601.15	4,5	1,5
01.550.600.05	5,5	0,5
01.550.600.15	5,5	1,5
01.550.601.05	5,5	0,5
01.550.601.15	5,5	1,5

Screw Ref. Number: 01100

## Titanium Abutments for cemented restorations.



Ref. Number    Diameter  $\varnothing$     Angulation Degrees(°)    Gingiva Height (mm)

01.340.00.120	3,4	0 °	1,2
01.340.00.270	3,4	0 °	2,7
01.340.00.370	3,4	0 °	3,7
01.340.17.120	3,4	17 °	1,2
01.340.17.270	3,4	17 °	2,7
01.340.17.370	3,4	17 °	3,7
01.380.00.120	3,8	0 °	1,2
01.380.00.270	3,8	0 °	2,7
01.380.00.370	3,8	0 °	3,7
01.380.17.120	3,8	17 °	1,2
01.380.17.270	3,8	17 °	2,7
01.380.17.370	3,8	17 °	3,7
01.450.00.120	4,5	0 °	1,2
01.450.00.270	4,5	0 °	2,7
01.450.00.370	4,5	0 °	3,7
01.450.17.120	4,5	17 °	1,2
01.450.17.270	4,5	17 °	2,7
01.450.17.370	4,5	17 °	3,7
01.550.00.120	5,5	0 °	1,2
01.550.00.270	5,5	0 °	2,7
01.550.00.370	5,5	0 °	3,7
01.550.17.120	5,5	17 °	1,2
01.550.17.270	5,5	17 °	2,7
01.550.17.370	5,5	17 °	3,7

Screw Ref. Number: 01100

# Yellow Line.1

Titanium grade 5

Prosthetic components compatible with  
XIVE FRIALIT® DENTSPLY implants

## Castable Abutments.

Ref. Number Diameter  $\varnothing$



\* Two types of castable abutments are available. One is fully plastic and one is with pre-fabricated Co-Cr Implant connection for cast-on.

Anti-Rotation

No Anti-rotation

	01.340.300		3,4
	01.340.301		3,4
	01.340.710		3,4
	01.340.711		3,4
	01.380.300		3,8
	01.380.301		3,8
	01.380.710		3,8
	01.380.711		3,8
	01.450.300		4,5
	01.450.301		4,5
	01.450.710		4,5
	01.450.711		4,5
	01.550.300		5,5
	01.550.301		5,5
	01.550.710		5,5
	01.550.711		5,5

Screw Ref. Number: 01:100 / 01:100PL

## Overdenture Over-Lock Abutments.

Ref. Number Diameter  $\varnothing$  Height (mm)



\* Over-Locks are compatible to locator abutments for overdentures. 5 different Heights.

01.340.801		3,4	1
01.340.802		3,4	2
01.340.803		3,4	3
01.340.804		3,4	4
01.340.805		3,4	5
01.380.801		3,8	1
01.380.802		3,8	2
01.380.803		3,8	3
01.380.804		3,8	4
01.380.805		3,8	5
01.450.801		4,5	1
01.450.802		4,5	2
01.450.803		4,5	3
01.450.804		4,5	4

# Yellow Line.1

Prosthetic components compatible with XIVE FRIALIT® DENTSPLY implants

## Overlock Standard Retention Kit.

Description

Reference Number



\* Available either as a set or individually. They are used in cases where the total angulation axis among implants does not exceed 15°.

Metal Housing	MH800
Black Lab Plastic	PL.800.BLACK
Blue Plastic Light Retention 0.68 KG	PL.800.BLUE
Grey Plastic Medium Retention 1.36 KG	PL.800.GREY
Clear Plastic Strong Retention 2.26 KG	PL.800.CLEAR

## Overlock Extended Retention Kit with no Core.

Description

Reference Number



\* Available either as a set or individually. They are used in cases where the total angulation axis among implants exceeds 15°.

Metal Housing	MH800
Black Lab Plastic	PL.800.BLACK
Red Plastic Light Retention 0.68 KG	PL.800.RED
Orange Plastic Medium Retention 1.36 KG	PL.800.ORANGE
Green Plastic Strong Retention 2.26 KG	PL.800.GREEN

## Titanium Temporary Cylinders.

Ref. Number

Diameter ∅



	01.340.900	3.4
	01.340.901	3.4
	01.380.900	3.8
	01.380.901	3.8
	01.450.900	4.5
	01.450.901	4.5
	01.550.900	5.5
	01.550.901	5.5



Anti-Rotation



No Anti-rotation

◆ Screw Ref. Number: 01.100


\* Chairside use or indirect in lab. With and without antirotation depending on the type of restoration (crown or bridge). Golden warm hue for better aesthetics.

# Yellow Line.1

Titanium grade 5

Prosthetic components compatible with  
XIVE FRIALIT® DENTSPLY implants

## Multi-Unit Abutments.

	Ref. Number	Diameter $\varnothing$	Angulation Degrees(°)	Gingiva Height (mm)
	MU.01.340.00.100	3,4	0°	1,0
	MU.01.340.00.200	3,4	0°	2,0
	MU.01.340.00.300	3,4	0°	3,0
	MU.01.340.00.400	3,4	0°	4,0
	MU.01.380.00.100	3,8	0°	1,0
	MU.01.380.00.200	3,8	0°	2,0
	MU.01.380.00.300	3,8	0°	3,0
	MU.01.380.00.400	3,8	0°	4,0
	MU.01.450.00.100	4,5	0°	1,0
	MU.01.450.00.200	4,5	0°	2,0
	MU.01.450.00.300	4,5	0°	3,0
	MU.01.450.00.400	4,5	0°	4,0

\* Multi-unit abutments is currently the most accepted and highly recommended solution in screw retained restorations. They have many advantages such as a common prosthetic platform for all implants.

## Multi-Unit Prosthetic System.

	Description	Reference Number	
	Healing Screw	MU.402	
	Impression Post Open Tray	MU.500	
	Scan Abutment	MU.SA	
	Lab Analog	MU.200	
	Plastic Castable	MU.301	
	Ti-Base	MU.601	
	Titanium Temporary Cylinder	MU.901	
	 <b>Screw Ref. Number:</b> MU.500:100 MU.100		

\* Multi-Unit has its own prosthetic components, the same for all implant systems.